

KB Financial Group Fact Book

2021 4Q

Disclaimer

Highlights

KB Financial Group

Condensed Income Statement
Condensed Balance Sheet
Interest Income / Spread / Margin
Fee and Commission Income
Other Operating Income
Provision for Credit Losses
General & Administrative Expenses
Asset Quality
Capital Adequacy
Organizational Structure
Employees / Branches
Credit Ratings

KB Kookmin Bank

Condensed Income Statement
Condensed Balance Sheet
Interest Income / Spread / Margin
Fee and Commission Income
Other Operating Income
Provision for Credit Losses
General & Administrative Expenses
Loans / Deposits
Asset Quality
Delinquency
Capital Adequacy
Credit Ratings
Housing Price Index

KB Securities

Condensed Income Statement
Condensed Balance Sheet
Key Indicators

KB Kookmin Card

Condensed Income Statement
Condensed Balance Sheet
Customers / Volume / Receivables
Asset Quality
Delinquency

KB Insurance

Condensed Income Statement
Condensed Balance Sheet
Key Indicators
Direct Premiums
Loss & Expense Ratios
Monthly Initial Premiums

Prudential Life Insurance

Condensed Income Statement
Condensed Balance Sheet
Key Indicators
Premium Income
Loss & Expense Ratios
APE

Other Subsidiaries

Condensed Income Statement
Condensed Balance Sheet

Contacts

[Return to Home](#)**Disclaimer****Highlights****KB Financial Group****KB Kookmin Bank****KB Securities****KB Insurance****KB Kookmin Card****Prudential Life Insurance****Other Subsidiaries****Contacts**

The consolidated financial information of KB Financial Group Inc. (the “Group”) presented herein is based on the Korean International Financial Reporting Standards(K-IFRS). It is currently being audited by the Group’s independent auditor, and accordingly, is subject to change.

The consolidated financial information presented herein is based on Korean IFRS9(K-IFRS9). Note that the financial results for years before 2017 contained herein have not been restated retrospectively.

From 2018, for better peer comparison purpose, the Group reclassified certain interest income out of Net Gain/Loss on Financial Assets at FVPL under Other Operating Profit to Interest Income under Net Interest Income. Note that beginning from the financial results for 2017 contained herein have been restated retrospectively.

As KB Insurance and KB Capital became wholly-owned subsidiaries of the Group on July 7, 2017, the financial results of KB Insurance and KB Capital have been fully consolidated in the Group’s financial statements since 3Q17.

As Prudential Life Insurance became wholly-owned subsidiary of the Group as of August 31, 2020, the financial results have been fully consolidated in the Group’s financial statements since September, 2020

From 3Q21, the Group applied accounting policy in accordance the international Financial Reporting Interpretation Committee(IFRIC) agenda decision over K-IFRS No.1019(Employee benefits). However, please note that the financial information for the past period contained herein has not been restated retrospectively.

Totals may not sum due to rounding.

[Disclaimer](#)
[Highlights](#)
[KB Financial Group](#)
[KB Kookmin Bank](#)
[KB Securities](#)
[KB Insurance](#)
[KB Kookmin Card](#)
[Prudential Life Insurance](#)
[Other Subsidiaries](#)
[Contacts](#)
◆ Financial Statements

(bn Won)	1Q20	2Q20	3Q20	4Q20	1Q21	2Q21	3Q21	4Q21(E)
KB Financial Group								
Total Assets	544,881.7	569,476.6	605,506.4	610,672.2	620,939.2	633,747.8	650,506.5	663,895.3
Total Liabilities	506,072.2	529,172.5	563,398.5	567,310.7	576,873.8	588,022.4	602,832.9	615,600.3
Total Equity	38,809.5	40,304.1	42,107.9	43,361.5	44,065.4	45,725.4	47,673.6	48,293.9
Net Income	738.9	992.5	1,194.2	576.7	1,285.2	1,207.4	1,305.7	586.1
Net Income (attributable to controlling interests)	729.5	981.8	1,166.6	577.3	1,270.0	1,204.3	1,298.1	637.2
Total Asset including AUM ¹⁾²⁾	811,438.4	874,146.4	908,203.3	993,424.6	1,027,760.2	1,060,959.2	1,082,081.7	1,121,216.0
(AUM) ²⁾	266,556.7	304,669.8	302,696.9	382,752.4	406,821.0	427,211.4	431,575.2	457,320.7
Total Assets by Subsidiaries								
KB Kookmin Bank	406,255.6	425,310.2	437,038.8	438,444.1	447,822.5	455,817.9	470,714.5	483,564.9
KB Securities ³⁾	54,009.3	56,606.6	55,843.0	57,570.7	56,757.5	56,893.6	57,203.9	55,494.0
KB Insurance ⁴⁾	37,122.3	37,677.1	38,082.9	39,078.1	39,264.1	40,267.9	41,097.4	41,472.2
KB Kookmin Card	22,462.9	23,858.8	24,292.3	24,071.6	25,106.7	25,841.3	27,021.9	27,349.6
Prudential Life ⁵⁾			24,408.3	25,121.7	24,969.0	25,508.0	25,615.2	26,287.1
KB Asset Management	392.9	385.9	413.3	335.6	312.2	343.8	363.1	375.7
KB Capital	11,504.8	12,140.4	12,326.6	12,823.7	12,901.3	13,803.1	14,180.6	14,529.4
KB Life Insurance	9,461.4	9,998.8	10,213.7	10,424.9	10,698.6	10,904.1	10,800.8	10,634.6
KB Real Estate Trust	374.1	393.4	420.4	437.6	438.2	445.2	475.9	496.5
KB Savings Bank	1,403.4	1,550.0	1,700.7	1,883.7	2,084.2	2,345.8	2,587.1	2,601.2
KB Investment	761.7	801.3	850.8	848.7	836.5	895.6	953.6	1,197.7
KB Data Systems	44.1	44.5	42.7	40.3	38.9	41.8	57.6	43.7
KB Credit Information	27.9	28.5	28.3	27.7	27.3	28.7	27.7	28.7

Total Equity by Subsidiaries								
KB Kookmin Bank	28,622.3	29,323.0	29,512.7	30,408.1	30,174.1	31,032.4	32,742.2	32,888.9
KB Securities ³⁾	4,619.8	4,804.2	4,998.3	5,054.2	5,162.5	5,320.2	5,433.1	5,485.6
KB Insurance ⁴⁾	3,978.7	4,057.0	4,114.1	3,991.7	3,831.9	3,952.0	4,117.8	4,143.3
KB Kookmin Card	4,030.1	4,098.3	4,201.9	4,281.7	4,258.7	4,376.1	4,509.2	4,555.6
Prudential Life ⁵⁾			2,535.9	2,439.9	2,206.2	2,294.2	2,223.0	2,294.5
KB Asset Management	169.7	187.6	205.4	223.1	187.9	209.5	228.0	247.2
KB Capital	1,241.6	1,274.0	1,410.2	1,431.6	1,479.0	1,530.6	1,589.5	1,822.2
KB Life Insurance	610.8	636.9	631.4	582.1	527.0	522.8	500.7	460.3
KB Real Estate Trust	283.8	301.1	318.3	329.5	321.6	338.1	365.7	376.8
KB Savings Bank	212.7	218.9	222.0	225.6	231.9	250.8	258.7	262.1
KB Investment	209.5	216.2	231.2	230.1	224.0	241.7	242.0	275.5
KB Data Systems	21.8	21.6	20.8	17.3	16.0	15.8	17.0	18.6
KB Credit Information	15.1	14.8	15.2	15.9	16.0	16.6	15.9	16.4
Net Income by Subsidiaries								
KB Kookmin Bank	586.3	660.4	635.7	415.8	688.5	734.1	777.7	390.5
KB Securities ³⁾	-21.4	150.2	209.7	87.1	221.1	153.3	168.9	51.0
KB Insurance ⁴⁾	77.2	66.8	42.6	-22.7	68.8	74.1	126.3	32.6
KB Kookmin Card	82.1	81.7	91.4	69.5	141.5	111.3	121.3	44.8
Prudential Life ⁵⁾			11.1	44.6	112.1	80.3	63.2	80.6
KB Asset Management	4.4	17.2	17.8	17.9	19.9	22.5	18.4	19.1
KB Capital	39.3	34.2	41.3	26.8	53.9	53.6	63.2	39.2
KB Life Insurance	5.9	5.9	-2.6	-32.4	-1.5	-9.5	-7.1	-28.5
KB Real Estate Trust	21.0	17.3	17.2	11.4	27.1	16.5	27.6	10.3
KB Savings Bank	3.4	6.5	3.3	4.1	6.4	1.3	7.9	3.3
KB Investment	-5.3	6.8	15.0	-1.1	3.9	17.7	0.2	33.5
KB Data Systems	1.1	-0.2	-0.8	-1.8	-1.4	-0.1	1.1	0.9
KB Credit Information	0.2	-0.3	0.4	0.8	0.1	0.5	-0.6	0.4

1) Simple arithmetic sum of each subsidiary's total assets(including AUM) on the financial statements for group reporting)

2) Starting in 4Q20, new standards have been applied to AUM calculation. Figures prior to 4Q20 have not been restated retrospectively

3) Financial information prior to 4Q16 represent financial results of KB Investment & Securities

4) Financial information prior to 2Q17 represent financial results of KB Insurance on a separate financial statement

5) Financial results have been fully consolidated in the Group's financial statements since 3Q20(one month period of September)

◆ Key Financial Indicators

KB Financial Group	1Q20	2Q20	3Q20	4Q20	1Q21	2Q21	3Q21	4Q21(E)
ROA (Quarterly)	0.56%	0.72%	0.81%	0.38%	0.85%	0.77%	0.81%	0.35%
ROA (Cumulative)	0.56%	0.64%	0.70%	0.61%	0.85%	0.81%	0.81%	0.69%
ROE (Quarterly) ¹⁾	7.70%	10.28%	11.73%	5.61%	12.50%	11.48%	11.73%	5.54%
ROE (Cumulative) ¹⁾	7.70%	8.97%	9.90%	8.79%	12.50%	11.95%	11.85%	10.22%
Basic EPS (Won, Quarterly)	1,864	2,512	2,977	1,456	3,225	3,045	3,279	1,584
Basic EPS (Won, Cumulative)	1,864	4,376	7,353	8,809	3,225	6,270	9,550	11,134
BPS (Won)	91,213	93,706	97,551	100,485	102,304	106,637	112,243	113,425
NIM (Quarterly)	1.83%	1.74%	1.73%	1.75%	1.82%	1.82%	1.83%	1.85%
NIM (Cumulative)	1.83%	1.78%	1.77%	1.76%	1.82%	1.82%	1.82%	1.83%
CIR (Quarterly)	53.2%	48.5%	49.5%	67.4%	47.3%	46.8%	45.6%	59.2%
CIR (Cumulative)	53.2%	50.6%	50.3%	54.7%	47.3%	47.1%	46.6%	49.7%
Credit Cost Ratio (Quarterly)	0.25%	0.29%	0.22%	0.29%	0.20%	0.25%	0.20%	0.54%
Credit Cost Ratio (Cumulative)	0.25%	0.27%	0.25%	0.26%	0.20%	0.22%	0.22%	0.30%
NPL Ratio	0.50%	0.48%	0.46%	0.41%	0.42%	0.39%	0.36%	0.33%
NPL Coverage Ratio(New) ²⁾	141.36%	144.41%	148.35%	168.59%	162.34%	173.10%	177.77%	208.89%
NPL Coverage Ratio(Old) ³⁾	293.54%	296.50%	311.61%	345.87%	336.51%	363.69%	381.60%	422.90%
BIS Ratio	14.08%	14.24%	14.65%	15.28%	16.04%	16.07%	16.12%	15.78%
CET 1 Ratio	13.02%	12.91%	13.06%	13.30%	13.79%	13.73%	13.92%	13.46%
KB Kookmin Bank	1Q20	2Q20	3Q20	4Q20	1Q21	2Q21	3Q21	4Q21(E)
ROA (Quarterly)	0.59%	0.65%	0.60%	0.38%	0.63%	0.65%	0.66%	0.28%
ROA (Cumulative)	0.59%	0.62%	0.61%	0.55%	0.63%	0.64%	0.65%	0.55%
ROE (Quarterly)	8.18%	9.19%	8.66%	5.57%	9.30%	9.71%	9.73%	4.74%
ROE (Cumulative)	8.18%	8.67%	8.67%	7.86%	9.30%	9.48%	9.53%	8.30%
NIM (Quarterly)	1.56%	1.50%	1.49%	1.51%	1.56%	1.56%	1.58%	1.61%
NIM (Cumulative)	1.56%	1.53%	1.52%	1.51%	1.56%	1.56%	1.57%	1.58%
CIR (Quarterly)	49.4%	48.6%	47.7%	67.9%	50.4%	47.4%	47.9%	62.2%
CIR (Cumulative)	49.4%	49.0%	48.6%	53.6%	50.4%	48.9%	48.6%	52.2%
NPL Ratio	0.36%	0.33%	0.32%	0.28%	0.29%	0.26%	0.23%	0.20%
NPL Coverage Ratio(New) ²⁾	126.73%	134.46%	140.39%	165.20%	156.74%	172.76%	182.27%	225.30%
NPL Coverage Ratio(Old) ³⁾	326.13%	343.31%	360.07%	407.40%	389.38%	431.85%	471.18%	544.04%
BIS Ratio	15.01%	14.38%	17.20%	17.78%	18.49%	18.92%	18.68%	17.46%
CET 1 Ratio	13.56%	12.79%	15.07%	15.10%	15.60%	15.88%	15.88%	14.68%
Loan to Deposit Ratio ⁴⁾	98.3%	100.4%	99.9%	101.7%	100.4%	100.4%	100.1%	100.2%

1) Common shares basis, eliminating the effects of supplementary capital

2) Based on new formula in accordance with FSS guideline: Loan loss reserves / NPL (i.e. not including reserves for credit losses)

3) Including reserves for credit losses

4) Based on new formula in accordance with FSS guideline from 2020

Disclaimer
Highlights
KB Financial Group
Condensed Income Statement
[Condensed Balance Sheet](#)
[Interest Income / Spread / Margin](#)
[Fee and Commission Income](#)
[Other Operating Income](#)
[Provision for Credit Losses](#)
[General & Administrative Expenses](#)
[Asset Quality](#)
[Capital Adequacy](#)
[Organizational Structure](#)
[Employees / Branches](#)
[Credit Ratings](#)
KB Kookmin Bank
KB Securities
KB Insurance
KB Kookmin Card
Prudential Life Insurance
Other Subsidiaries
Contacts

(bn Won)	1Q20	2Q20	3Q20	4Q20	1Q21	2Q21	3Q21	4Q21(E)
Net interest income	2,349.2	2,334.0	2,460.2	2,578.9	2,642.3	2,758.8	2,854.3	2,974.2
Net fee and commission income	670.1	711.2	789.2	788.4	967.2	865.4	911.3	881.7
Net other operating income(expenses)	-277.3	227.7	-17.7	-121.3	33.8	-57.2	-113.8	-234.4
Gross operating income	2,742.0	3,272.9	3,231.7	3,246.0	3,643.3	3,567.0	3,651.8	3,621.5
General & administrative expenses	1,459.2	1,586.4	1,600.6	2,187.0	1,723.1	1,669.5	1,664.9	2,143.4
Operating profit before provision for credit losses	1,282.8	1,686.5	1,631.1	1,059.0	1,920.2	1,897.5	1,986.9	1,478.1
Provision for credit losses	243.7	296.0	214.6	289.1	173.4	223.7	199.4	588.6
Net operating profit	1,039.1	1,390.5	1,416.5	769.9	1,746.8	1,673.8	1,787.5	889.5
Net non-operating profit(loss)	-19.7	-14.3	154.4	25.2	39.6	-6.8	-4.5	-44.3
Profit before income tax	1,019.4	1,376.2	1,570.9	795.1	1,786.4	1,667.0	1,783.0	845.2
Income tax expense	280.5	383.7	376.7	218.4	501.2	459.6	477.3	259.1
Profit for the period	738.9	992.5	1,194.2	576.7	1,285.2	1,207.4	1,305.7	586.1
Profit attributable to non-controlling interest	9.4	10.7	27.6	-0.6	15.2	3.1	7.6	-51.1
Profit attributable to shareholders of the parent company	729.5	981.8	1,166.6	577.3	1,270.0	1,204.3	1,298.1	637.2

[Return to Home](#)
KB Financial Group
Disclaimer
Highlights
KB Financial Group

Condensed Income Statement

Condensed Balance Sheet

Interest Income / Spread / Margin

Fee and Commission Income

Other Operating Income

Provision for Credit Losses

General & Administrative Expenses

Asset Quality

Capital Adequacy

Organizational Structure

Employees / Branches

Credit Ratings

KB Kookmin Bank
KB Securities
KB Insurance
KB Kookmin Card
Prudential Life Insurance
Other Subsidiaries
Contacts

(bn Won)	Mar. 20	Jun. 20	Sep. 20	Dec. 20	Mar. 21	Jun. 21	Sep. 21	Dec. 21(E)
Total Assets	544,881.7	569,476.6	605,506.4	610,672.2	620,939.2	633,747.8	650,506.5	663,895.3
Cash and due from financial institutions	23,136.3	22,509.5	25,380.7	25,608.8	30,148.8	24,436.9	27,827.8	31,009.4
Financial assets at fair value through profit or loss	57,072.0	58,653.0	58,835.9	61,035.5	60,155.9	64,981.6	62,075.7	66,005.8
Derivative financial assets	5,179.9	3,952.9	3,577.8	5,545.4	3,733.4	3,176.1	4,252.9	3,721.4
Financial investments	73,526.0	74,810.3	96,714.7	98,695.4	95,929.7	99,349.2	104,654.3	104,847.9
Loans	351,402.6	367,862.5	378,090.8	377,167.0	383,242.5	395,432.0	402,600.4	417,900.3
(Reserves for loan losses)	-2,434.7	-2,546.1	-3,255.2	-3,283.4	-3,301.5	-3,333.9	-3,366.8	-3,684.1
Investments in associates	565.0	691.7	892.3	771.4	632.1	458.9	635.9	448.7
Tangible assets	7,903.6	7,903.3	8,565.8	8,164.8	8,136.1	8,055.7	8,198.6	8,163.9
Goodwill & Intangible assets	2,684.5	3,053.8	3,202.1	3,351.1	3,308.9	3,275.8	3,244.9	3,266.5
Current income tax assets	18.9	22.3	100.2	109.8	122.1	66.7	96.3	98.8
Deferred income tax assets	3.7	27.5	54.9	65.1	80.4	94.4	110.3	159.1
Other assets	23,389.2	29,989.8	30,091.2	30,157.9	35,449.3	34,420.5	36,809.4	28,273.5
Total Liabilities	506,072.2	529,172.5	563,398.5	567,310.7	576,873.8	588,022.4	602,832.9	615,601.3
Financial liabilities at fair value through profit or loss	12,736.1	13,366.4	13,270.6	11,810.1	12,750.1	11,757.3	12,742.9	12,089.0
Deposits	317,820.3	327,743.5	337,986.6	338,580.2	339,270.8	348,403.3	357,283.3	372,023.9
Debts	41,840.8	46,917.6	47,797.9	49,827.2	50,444.5	53,259.5	52,658.4	56,912.4
Debentures	54,156.2	57,422.8	60,254.5	62,760.7	62,221.0	63,911.4	67,222.2	67,430.2
Derivative financial liabilities	6,447.1	4,290.8	3,780.3	5,222.9	3,370.5	2,841.4	4,333.8	3,682.3
Net defined benefit liabilities	291.1	347.5	446.4	248.2	292.8	333.6	381.1	224.7
Provisions	523.3	595.1	605.9	714.9	707.3	726.3	728.6	808.6
Accrued expenses payables	3,590.4	3,693.5	3,898.4	3,603.2	3,364.5	3,351.2	3,499.9	3,568.3
Other liabilities	68,666.9	74,795.3	95,357.9	94,543.3	104,452.3	103,438.4	103,982.7	98,861.9
Total Equity	38,809.5	40,304.1	42,107.9	43,361.5	44,065.4	45,725.4	47,673.6	48,293.9
Share capital	2,090.6	2,090.6	2,090.6	2,090.6	2,090.6	2,090.6	2,090.6	2,090.6
Hybrid financial instrument	399.2	798.1	1,197.1	1,696.0	2,294.6	2,569.9	2,569.9	2,838.2
Capital surplus	17,122.9	16,728.1	16,723.6	16,723.6	16,723.6	16,723.6	16,941.5	16,940.2
Accumulated other comprehensive income	173.0	290.2	386.4	612.3	294.5	501.5	1,449.6	1,055.0
Retained earnings	19,574.7	20,793.9	21,949.9	22,517.4	22,903.1	24,075.9	25,063.3	25,672.8
Treasury shares	-1,136.2	-1,136.2	-1,136.2	-1,136.2	-1,136.2	-1,136.2	-1,136.2	-1,136.2
Non-controlling interest	585.3	739.4	896.5	857.8	895.2	900.1	694.9	833.3

Disclaimer
Highlights
KB Financial Group

- Condensed Income Statement
- Condensed Balance Sheet
- Interest Income / Spread / Margin**
- Fee and Commission Income
- Other Operating Income
- Provision for Credit Losses
- General & Administrative Expenses
- Asset Quality
- Capital Adequacy
- Organizational Structure
- Employees / Branches
- Credit Ratings

KB Kookmin Bank
KB Securities
KB Insurance
KB Kookmin Card
Prudential Life Insurance
Other Subsidiaries
Contacts
Group Interest Income

(bn Won)	1Q20	2Q20	3Q20	4Q20	1Q21	2Q21	3Q21	4Q21(E)
Interest Income	3,620.0	3,601.7	3,578.8	3,685.2	3,624.9	3,687.8	3,824.0	4,074.2
Due from financial institutions	35.5	23.4	15.3	18.6	17.1	16.9	13.6	20.5
Financial investments	511.6	479.2	480.9	522.8	516.0	514.4	537.5	561.9
Loans	3,003.0	3,075.6	3,031.6	3,086.4	3,034.8	3,096.9	3,210.0	3,418.3
Others	69.9	23.5	51.0	57.4	57.0	59.6	62.9	73.5
Interest Expense	1,270.8	1,267.7	1,118.6	1,106.3	982.6	929.0	969.7	1,100.0
Deposits	788.9	786.2	677.3	664.4	561.5	508.9	531.9	616.3
Debts & debentures	453.9	460.2	423.4	421.8	402.6	401.6	417.2	458.7
Others	28.0	21.3	17.9	20.1	18.5	18.5	20.6	25.0
Net Interest Income	2,349.2	2,334.0	2,460.2	2,578.9	2,642.3	2,758.8	2,854.3	2,974.2

Group Net Interest Margin(NIM)¹⁾

	1Q20	2Q20	3Q20	4Q20	1Q21	2Q21	3Q21	4Q21(E)
NIM (Quarterly)	1.83%	1.74%	1.73%	1.75%	1.82%	1.82%	1.83%	1.85%
NIM (Cumulative)	1.83%	1.78%	1.77%	1.76%	1.82%	1.82%	1.82%	1.83%

1) Bank NIM+ Card NIM(excluding credit card merchant fees)

Interest Spread / Net Interest Margin(NIM)¹⁾ excluding credit card merchant fees

(bn Won)	1Q20	2Q20	3Q20	4Q20	1Q21	2Q21	3Q21	4Q21(E)
Interest earning assets	368,901.7	386,595.5	394,100.1	401,637.8	402,421.7	407,869.5	420,531.6	435,568.2
Interest earned on the assets ²⁾	2,846.5	2,762.8	2,670.5	2,631.5	2,581.7	2,606.8	2,703.5	2,910.7
Yield	3.10%	2.87%	2.70%	2.61%	2.60%	2.56%	2.55%	2.65%
Interest bearing liabilities	355,553.1	375,681.3	381,609.7	389,144.0	389,863.0	396,246.3	408,582.7	424,532.4
Interest paid on the liabilities ³⁾	1,168.7	1,089.7	955.7	861.4	779.0	757.3	769.0	880.4
Yield	1.32%	1.17%	1.00%	0.88%	0.81%	0.77%	0.75%	0.82%
Interest spread	1.78%	1.71%	1.70%	1.73%	1.79%	1.80%	1.80%	1.83%
Net Interest Margin	1.83%	1.74%	1.73%	1.75%	1.82%	1.82%	1.83%	1.85%

1) Bank NIM + Card NIM

2) Interest income - credit guarantee fee

3) Interest expense + deposit insurance fee

Interest Spread / Net Interest Margin(NIM)¹⁾ including credit card merchant fees

(bn Won)	1Q20	2Q20	3Q20	4Q20	1Q21	2Q21	3Q21	4Q21(E)
Interest earning assets	372,456.7	390,042.2	397,744.9	405,436.2	406,069.9	411,929.4	424,552.8	439,779.4
Interest earned on the assets ²⁾	3,193.8	3,138.9	3,042.0	3,024.5	2,976.6	3,007.0	3,095.2	3,353.9
Yield	3.45%	3.24%	3.04%	2.97%	2.97%	2.93%	2.89%	3.03%
Interest bearing liabilities	355,553.1	375,681.3	381,609.7	389,144.0	389,863.0	396,246.3	408,582.7	424,532.4
Interest paid on the liabilities ³⁾	1,168.7	1,089.7	955.7	861.4	779.0	757.3	769.0	880.4
Yield	1.32%	1.17%	1.00%	0.88%	0.81%	0.77%	0.75%	0.82%
Interest spread	2.13%	2.07%	2.05%	2.09%	2.16%	2.16%	2.15%	2.20%
Net Interest Margin	2.19%	2.11%	2.09%	2.12%	2.19%	2.19%	2.17%	2.23%

1) Bank NIM + Card NIM

2) Interest income - credit guarantee fee

3) Interest expense + deposit insurance fee

[Return to Home](#)
KB Financial Group
Disclaimer
Highlights
KB Financial Group
[Condensed Income Statement](#)
[Condensed Balance Sheet](#)
[Interest Income / Spread / Margin](#)
[Fee and Commission Income](#)
[Other Operating Income](#)
[Provision for Credit Losses](#)
[General & Administrative Expenses](#)
[Asset Quality](#)
[Capital Adequacy](#)
[Organizational Structure](#)
[Employees / Branches](#)
[Credit Ratings](#)
KB Kookmin Bank
KB Securities
KB Insurance
KB Kookmin Card
Prudential Life Insurance
Other Subsidiaries
[Contacts](#)

(bn Won)	1Q20	2Q20	3Q20	4Q20	1Q21	2Q21	3Q21	4Q21(E)
Trust Fee	136.5	99.4	122.9	127.6	167.5	140.9	143.4	135.1
Fee and Commission	533.6	611.8	666.3	660.8	799.7	724.5	767.9	746.6
Fees from credit cards	112.5	133.9	128.0	155.2	182.7	162.3	162.1	188.1
Guarantee fees	13.1	14.7	13.6	12.7	12.4	11.7	11.9	13.8
Other commissions in Won	389.9	433.5	497.2	451.8	554.4	504.5	555.8	493.3
Commissions received as agency	50.0	46.9	51.0	48.6	49.2	55.8	54.3	45.9
Commissions received on represent securities	40.4	41.4	44.7	45.6	49.0	45.8	44.3	35.6
Commissions received on banking business	49.9	46.2	46.5	46.5	44.9	44.9	43.9	44.7
Commissions received on securities business	144.8	193.1	250.5	204.9	251.4	228.5	224.9	176.6
Others	104.8	105.9	104.5	106.2	159.9	129.5	188.4	190.5
Other commissions in foreign currency	18.1	29.7	27.5	41.1	50.2	46.0	38.1	51.4
Net Fee and Commission Income	670.1	711.2	789.2	788.4	967.2	865.4	911.3	881.7

Disclaimer
Highlights
KB Financial Group
[Condensed Income Statement](#)
[Condensed Balance Sheet](#)
[Interest Income / Spread / Margin](#)
[Fee and Commission Income](#)
[Other Operating Income](#)
[Provision for Credit Losses](#)
[General & Administrative Expenses](#)
[Asset Quality](#)
[Capital Adequacy](#)
[Organizational Structure](#)
[Employees / Branches](#)
[Credit Ratings](#)
KB Kookmin Bank
KB Securities
KB Insurance
KB Kookmin Card
Prudential Life Insurance
Other Subsidiaries
Contacts

(bn Won)	1Q20	2Q20	3Q20	4Q20	1Q21	2Q21	3Q21	4Q21(E)
Net gain/loss on securities	1,053.2	-213.7	43.0	129.4	132.0	167.1	377.6	50.5
Net gain/loss on FVPL securities ¹⁾	885.3	-315.6	-3.6	121.9	68.5	145.6	386.0	191.1
Net gain/loss on FVOCI securities ²⁾	167.9	101.9	46.6	7.5	63.5	21.5	-8.4	-140.6
Net gain/loss on sales	133.3	98.5	44.7	2.3	35.6	19.2	-10.1	-142.5
Impairment loss	0.0	0.0	0.0	0.0	0.0	0.0	0.0	0.0
Others	34.6	3.5	1.8	5.2	27.9	2.3	1.7	1.9
Net gain/loss on derivatives & foreign currency translation	-1,003.6	758.6	296.0	402.6	186.4	153.2	-100.4	185.5
Other operating income	-326.9	-317.2	-356.7	-653.3	-284.6	-377.5	-391.0	-470.4
Deposit insurance fees & credit guarantee fees	-215.7	-223.4	-225.8	-230.6	-239.2	-247.1	-230.5	-239.9
Net gain/loss on sale of loans	51.5	42.7	31.1	38.7	42.4	44.9	22.1	12.6
Others	-162.7	-136.5	-162.0	-461.4	-87.8	-175.3	-182.6	-243.1
Net other operating income	-277.3	227.7	-17.7	-121.3	33.8	-57.2	-113.8	-234.4

1) Financial assets(liabilities) at fair value through profit or loss

2) Financial assets(liabilities) at fair value through other comprehensive income

[Return to Home](#)
KB Financial Group

Disclaimer

Highlights

KB Financial Group

- Condensed Income Statement
- Condensed Balance Sheet
- Interest Income / Spread / Margin
- Fee and Commission Income
- Other Operating Income
- Provision for Credit Losses**
- General & Administrative Expenses
- Asset Quality
- Capital Adequacy
- Organizational Structure
- Employees / Branches
- Credit Ratings

KB Kookmin Bank

KB Securities

KB Insurance

KB Kookmin Card

Prudential Life Insurance

Other Subsidiaries

Contacts

(bn Won)	1Q20	2Q20	3Q20	4Q20	1Q21	2Q21	3Q21	4Q21(E)
Provision for loan losses	243.5	254.4	214.9	254.4	159.3	222.5	198.0	542.0
Provision for acceptances and guarantees	-0.5	-7.1	-18.5	12.5	28.4	15.6	4.5	9.0
Provision for undrawn commitments	0.5	50.4	16.7	21.9	-12.6	-16.8	-3.1	39.1
Provision for financial guarantees & contracts	0.2	-1.7	1.5	0.3	-1.7	2.4	0.0	-1.5
Provision for Credit Losses	243.7	296.0	214.6	289.1	173.4	223.7	199.4	588.6

Group Credit Cost Ratio¹⁾

(bn Won)	1Q20	2Q20	3Q20	4Q20	1Q21	2Q21	3Q21	4Q21(E)
Total Outstanding Credit	348,356.8	355,479.6	362,674.6	366,427.8	369,244.0	377,019.4	390,803.3	400,786.2
Household	169,553.3	171,867.9	176,937.7	181,482.2	182,795.8	185,044.4	190,527.2	191,145.1
Corporate	157,442.2	162,033.0	163,342.1	162,084.3	163,054.5	168,082.0	176,365.5	184,460.5
Credit Card	21,361.3	21,578.8	22,394.7	22,861.3	23,393.7	23,893.0	23,910.6	25,180.7
Provision for Loan Losses	213.8	250.9	199.6	266.2	179.1	234.6	195.4	537.4
Household	99.5	125.1	74.6	88.1	58.4	57.1	40.6	81.0
Corporate	5.1	20.9	66.8	87.9	50.0	87.8	67.4	299.6
Credit Card	109.2	104.8	58.2	90.3	70.6	89.7	87.4	156.7
Quarterly Credit Cost	0.25%	0.29%	0.22%	0.29%	0.20%	0.25%	0.20%	0.54%
Household	0.24%	0.29%	0.17%	0.20%	0.13%	0.12%	0.09%	0.17%
Corporate	0.01%	0.05%	0.16%	0.21%	0.12%	0.21%	0.16%	0.66%
Credit Card	2.03%	1.96%	1.05%	1.59%	1.24%	1.52%	1.45%	2.53%
Cumulative Credit Cost	0.25%	0.27%	0.25%	0.26%	0.20%	0.22%	0.22%	0.30%
Household	0.24%	0.27%	0.23%	0.22%	0.13%	0.13%	0.11%	0.13%
Corporate	0.01%	0.03%	0.08%	0.11%	0.12%	0.17%	0.16%	0.30%
Credit Card	2.03%	1.99%	1.67%	1.64%	1.24%	1.38%	1.41%	1.70%

1) Based on simple arithmetic sum of subsidiaries

[Return to Home](#)
KB Financial Group

Disclaimer

Highlights

KB Financial Group

- Condensed Income Statement
- Condensed Balance Sheet
- Interest Income / Spread / Margin
- Fee and Commission Income
- Other Operating Income
- Provision for Credit Losses

General & Administrative Expenses

- Asset Quality
- Capital Adequacy
- Organizational Structure
- Employees / Branches
- Credit Ratings

KB Kookmin Bank

KB Securities

KB Insurance

KB Kookmin Card

Prudential Life Insurance

Other Subsidiaries

Contacts

(bn Won)	1Q20	2Q20	3Q20	4Q20	1Q21	2Q21	3Q21	4Q21(E)
Employee Benefits	878.5	991.2	1,007.8	1,465.7	1,113.9	1,074.1	1,064.6	1,382.5
Post-employment benefits	65.8	65.8	67.1	73.9	66.2	68.5	69.2	71.1
Termination benefits	8.6	0.2	0.1	352.2	-1.4	32.7	0.6	291.1
Salaries & employee benefits	602.8	660.3	724.0	851.5	774.5	762.3	767.6	805.0
Others	201.3	264.9	216.6	188.1	274.6	210.6	227.2	215.3
Depreciation and Amortization	211.7	204.6	217.9	240.7	213.4	193.9	213.8	229.5
Tangible assets	156.1	144.7	157.0	171.2	146.5	143.8	153.0	163.8
Intangible assets	46.9	49.3	50.2	60.8	66.7	50.9	61.0	64.9
Others	8.7	10.6	10.7	8.7	0.2	-0.8	-0.2	0.8
Other General and Administrative Expenses	369.0	390.6	374.9	480.6	395.8	401.5	386.5	531.4
Occupancy, furniture & equipment expenses	316.7	321.1	320.9	422.3	340.6	328.2	334.5	471.9
Taxes	52.3	69.5	54.0	58.3	55.2	73.3	52.0	59.5
General & Administrative Expenses	1,459.2	1,586.4	1,600.6	2,187.0	1,723.1	1,669.5	1,664.9	2,143.4

Cost to Income Ratio (CIR)

(bn Won)	1Q20	2Q20	3Q20	4Q20	1Q21	2Q21	3Q21	4Q21(E)
Gross operating income	2,742.0	3,272.9	3,231.7	3,246.0	3,643.3	3,567.0	3,651.8	3,621.5
General & administrative expenses	1,459.2	1,586.4	1,600.6	2,187.0	1,723.1	1,669.5	1,664.9	2,143.4
Quarterly CIR	53.2%	48.5%	49.5%	67.4%	47.3%	46.8%	45.6%	59.2%
Cumulative CIR	53.2%	50.6%	50.2%	54.7%	47.3%	47.1%	46.6%	49.7%

Disclaimer
Highlights
KB Financial Group

[Condensed Income Statement](#)
[Condensed Balance Sheet](#)
[Interest Income / Spread / Margin](#)
[Fee and Commission Income](#)
[Other Operating Income](#)
[Provision for Credit Losses](#)
[General & Administrative Expenses](#)

Asset Quality

[Capital Adequacy](#)
[Organizational Structure](#)
[Employees / Branches](#)
[Credit Ratings](#)

KB Kookmin Bank
KB Securities
KB Insurance
KB Kookmin Card
Prudential Life Insurance
Other Subsidiaries
Contacts

(bn Won)	Mar. 20	Jun. 20	Sep. 20	Dec. 20	Mar. 21	Jun. 21	Sep. 21	Dec. 21(E)
Total Outstanding Credits	348,356.8	355,479.6	362,674.6	366,427.8	369,244.0	377,019.4	390,803.3	400,786.2
Normal	343,968.7	351,321.4	358,579.4	362,557.6	365,478.9	373,245.0	386,975.4	397,075.8
Precautionary	2,630.1	2,440.4	2,439.7	2,379.2	2,224.1	2,318.5	2,405.0	2,391.4
Substandard	704.7	761.6	770.1	653.5	676.8	658.2	650.4	584.4
Doubtful	711.4	600.7	576.8	557.1	578.0	522.9	505.1	482.6
Estimated Loss	341.9	355.5	308.6	280.4	286.2	274.8	267.4	252.0
NPL (A)	1,758.0	1,717.8	1,655.5	1,491.0	1,541.0	1,455.9	1,422.9	1,319.0
NPL Ratio	0.50%	0.48%	0.46%	0.41%	0.42%	0.39%	0.36%	0.33%
Loan loss reserves ²⁾ (B)	2,485.1	2,480.7	2,455.9	2,513.6	2,501.7	2,520.2	2,529.6	2,755.2
Reserves for credit losses (C)	2,675.2	2,612.7	2,702.9	2,643.1	2,683.8	2,774.8	2,900.4	2,822.7
NPL Coverage Ratio(New)³⁾ (B/A)	141.36%	144.41%	148.35%	168.59%	162.34%	173.10%	177.77%	208.89%
NPL Coverage Ratio(Old)⁴⁾ [(B+C)/A]	293.54%	296.50%	311.61%	345.87%	336.51%	363.69%	381.60%	422.90%

1) Based on simple arithmetic sum of each subsidiary's figures (excl. overseas local subsidiaries, overseas equity investments, and SPCs for consolidation, etc.)

2) Allowances for loan losses and acceptances & guarantees

3) Based on new formula in accordance with FSS guideline: Loan loss reserves / NPL (i.e. not including reserves for credit losses)

4) Including reserves for credit losses

[Return to Home](#)
KB Financial Group
Disclaimer
Highlights
KB Financial Group

[Condensed Income Statement](#)
[Condensed Balance Sheet](#)
[Interest Income / Spread / Margin](#)
[Fee and Commission Income](#)
[Other Operating Income](#)
[Provision for Credit Losses](#)
[General & Administrative Expenses](#)
[Asset Quality](#)

Capital Adequacy

[Organizational Structure](#)
[Employees / Branches](#)
[Credit Ratings](#)

KB Kookmin Bank
KB Securities
KB Insurance
KB Kookmin Card
Prudential Life Insurance
Other Subsidiaries
Contacts

(bn Won)	Mar. 20	Jun. 20	Sep. 20	Dec. 20	Mar. 21	Jun. 21	Sep. 21	Dec. 21(E)
Tier 1 Capital	35,983.4	36,867.3	36,016.6	36,895.8	38,690.1	39,920.2	42,542.1	42,311.8
Common Equity Tier 1	35,251.0	35,726.8	34,504.3	34,886.3	36,089.8	37,048.8	39,670.3	39,150.4
Paid in capital	2,090.6	2,090.6	2,090.6	2,090.6	2,090.6	2,090.6	2,090.6	2,091.8
Capital surplus	13,190.3	13,190.3	13,190.3	13,190.3	13,190.3	13,190.3	13,190.3	13,190.3
Retained earnings	19,574.7	20,793.9	21,949.9	22,517.4	22,903.1	24,075.9	25,063.3	25,670.5
Others	2,969.9	2,675.8	2,771.9	2,997.5	2,680.0	2,887.1	4,053.1	3,663.7
Deductions	-2,574.3	-3,023.7	-5,498.4	-5,909.4	-4,774.1	-5,195.0	-4,726.9	-5,465.9
Additional Tier 1	732.3	1,140.5	1,512.3	2,009.5	2,600.3	2,871.4	2,871.8	3,161.4
Tier 2 Capital	2,138.0	2,555.7	2,707.5	3,184.4	3,292.8	3,449.3	3,395.3	3,578.4
Provisions	189.4	314.1	400.9	405.2	414.6	478.0	420.9	436.4
Subordinated debt(holding company)	400.0	400.0	400.0	400.0	400.0	400.0	400.0	400.0
Subordinated debt(Kookmin Bank)	1,548.5	1,841.6	1,906.6	2,379.1	2,478.2	2,571.3	2,574.4	2,742.0
Others	0.0	0.0	0.0	0.0	0.0	0.0	0.0	0.0
Total BIS Capital	38,121.3	39,423.0	38,724.1	40,080.1	41,982.9	43,369.5	45,937.4	45,890.1
Risk Weighted Assets	270,696.4	276,792.7	264,278.6	262,349.2	261,794.2	269,924.7	285,013.0	290,898.2
BIS Capital Ratio	14.08%	14.24%	14.65%	15.28%	16.04%	16.07%	16.12%	15.78%
Tier 1	13.29%	13.32%	13.63%	14.06%	14.78%	14.79%	14.93%	14.55%
Common Equity Tier 1	13.02%	12.91%	13.06%	13.30%	13.79%	13.73%	13.92%	13.46%
Tier 2	0.79%	0.92%	1.02%	1.21%	1.26%	1.28%	1.19%	1.23%

1) Based on BASEL III (calculated in accordance with the early adoption of Basel III Credit Risk Framework from September 2020)

Disclaimer

Highlights

KB Financial Group

- Condensed Income Statement
- Condensed Balance Sheet
- Interest Income / Spread / Margin
- Fee and Commission Income
- Other Operating Income
- Provision for Credit Losses
- General & Administrative Expenses
- Asset Quality
- Capital Adequacy

Organizational Structure

- Employees / Branches
- Credit Ratings

KB Kookmin Bank

KB Securities

KB Insurance

KB Kookmin Card

Prudential Life Insurance

Other Subsidiaries

Contacts

- As of Dec. 31, 2021

 **KB Financial Group**

KB Kookmin Bank 100%

Kookmin Bank Cambodia Plc. 100%

Kookmin Bank(China) Limited 100%

KB Microfinance Myanmar Co., Ltd 100%

KB BANK MYANMAR LTD 100%

PRASAC Microfinance Institution Limited 100%

PT Bank KB Bukopin, Tbk. 67.00%

PT Bukopin Finance 97.03%

PT Bank Syariah Bukopin 92.78%

KB Securities 100%

KBFG Securities America Inc. 100%

KB Securities Hong Kong Ltd. 100%

Keystone-Hyundai Sec. No.1 Private Equity Fund -%

KB SECURITIES VIETNAM JOINT STOCK COMPANY 99.81%

KBTS Technology Venture Private Equity Fund 16.00%

KB-Stonebridge Secondary Private Equity Fund 4.16%

KB-SPROTT Renewable Private Equity Fund I 7.69%

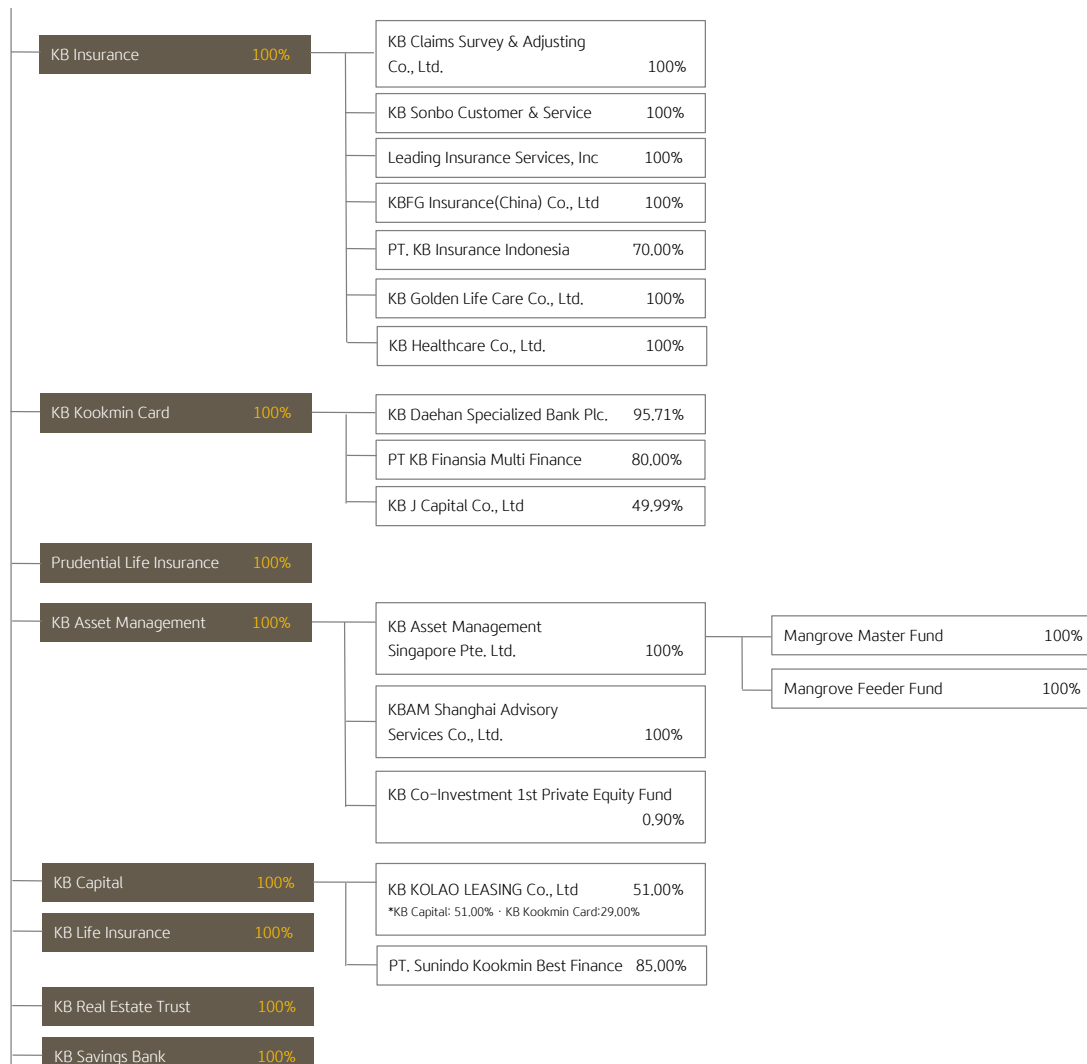
KB-SP Private Equity Fund IV 14.95%

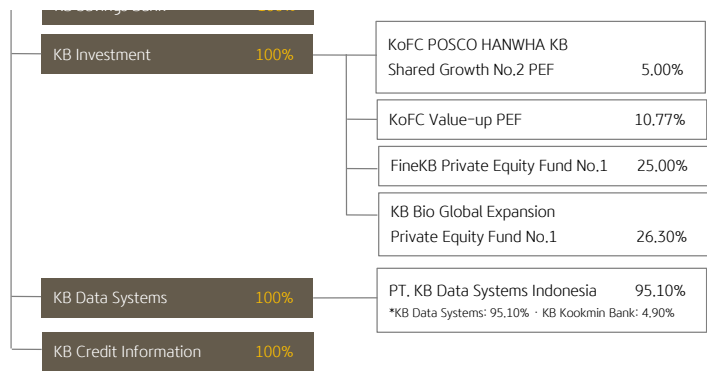
KB-NAU Special Situation Corporate Restructuring Private Equity Fund 6.00%

KB Material and Parts No. 1 PEF 14.47%

KB FINA JOINT STOCK COMPANY 77.82%

KB Bio Private Equity Fund III Ltd 12.20%





Disclaimer

Highlights

KB Financial Group

- Condensed Income Statement
- Condensed Balance Sheet
- Interest Income / Spread / Margin
- Fee and Commission Income
- Other Operating Income
- Provision for Credit Losses
- General & Administrative Expenses
- Asset Quality
- Capital Adequacy
- Organizational Structure
- Employees / Branches**
- Credit Ratings

KB Kookmin Bank

KB Securities

KB Insurance

KB Kookmin Card

Prudential Life Insurance

Other Subsidiaries

Contacts

Number of Employees

	Mar. 20	Jun. 20	Sep. 20	Dec. 20	Mar. 21	Jun. 21	Sep. 21	Dec. 21
KB Financial Group Inc. (holding company)	178	178	181	181	181	180	182	178
KB Kookmin Bank	16,005	16,005	16,006	16,077	15,242	15,229	15,281	15,375
KB Securities	2,805	2,769	2,769	2,788	2,743	2,774	2,815	2,825
KB Insurance	3,085	3,094	3,093	3,070	3,055	2,961	2,961	2,976
KB Kookmin Card	1,550	1,547	1,555	1,563	1,545	1,546	1,547	1,543
Prudential Life			527	510	468	454	448	466
KB Life Insurance	339	344	344	334	326	343	343	344
KB Asset Management	284	268	294	262	292	303	305	309
KB Capital	498	495	502	490	512	507	509	514
KB Savings Bank	147	147	147	147	151	159	166	157
KB Real Estate Trust	168	170	165	168	167	174	175	175
KB Investment	60	63	61	62	62	61	61	62
KB Credit Information	139	137	134	131	135	135	134	131
KB Data Systems	440	476	485	482	489	497	504	512
Total	25,698	25,693	26,263	26,265	25,368	25,323	25,431	25,567

Number of Employees of KB Kookmin Bank

	Mar. 20	Jun. 20	Sep. 20	Dec. 20	Mar. 21	Jun. 21	Sep. 21	Dec. 21
Directors	8	8	8	8	8	8	8	8
Executive	3	3	3	3	3	3	3	3
Non-Executive	5	5	5	5	5	5	5	5
Non-Standing	0	0	0	0	0	0	0	0
Executive Vice Presidents	20	20	20	20	21	21	21	20
Regional Directors	38	38	38	38	43	43	43	43
Regular Employees	15,944	15,944	15,945	16,016	15,175	15,162	15,214	15,309
Total¹⁾	16,005	16,005	16,006	16,077	15,242	15,229	15,281	15,375

1) Excluding non-executive and non-standing directors

Number of Employees of KB Securities

	Mar. 20	Jun. 20	Sep. 20	Dec. 20	Mar. 21	Jun. 21	Sep. 21	Dec. 21
Directors	45	45	45	45	48	48	49	49
Employees	2,760	2,724	2,724	2,743	2,695	2,726	2,766	2,776
Regular	2,163	2,158	2,153	2,162	2,082	2,073	2,111	2,112
Contract	597	566	571	581	613	653	655	664
Total	2,805	2,769	2,769	2,788	2,743	2,774	2,815	2,825

Number of Employees of KB Insurance

	Mar. 20	Jun. 20	Sep. 20	Dec. 20	Mar. 21	Jun. 21	Sep. 21	Dec. 21
Senior Management	37	37	36	36	37	37	37	30
Employees	3,048	3,057	3,057	3,034	3,018	2,924	2,924	2,946
Total	3,085	3,094	3,093	3,070	3,055	2,961	2,961	2,976

Number of Employees of KB Kookmin Card

	Mar. 20	Jun. 20	Sep. 20	Dec. 20	Mar. 21	Jun. 21	Sep. 21	Dec. 21
Senior Management	17	17	17	17	15	15	15	16
Employees	1,533	1,530	1,538	1,546	1,530	1,531	1,532	1,527
Total	1,550	1,547	1,555	1,563	1,545	1,546	1,547	1,543

Number of Employees of Prudential Life

	Mar. 20	Jun. 20	Sep. 20	Dec. 20	Mar. 21	Jun. 21	Sep. 21	Dec. 21
Senior Management			19	18	19	19	19	19
Employees			508	492	449	435	429	447
Total			527	510	468	454	448	466

Number of Branches / ATMs of KB Kookmin Bank

	Mar. 20	Jun. 20	Sep. 20	Dec. 20	Mar. 21	Jun. 21	Sep. 21	Dec. 21
Regular Branch	904	905	898	884	830	831	828	826
Sub-branch	113	113	105	88	124	123	97	88
ATM Branch	776	783	792	749	729	725	730	739
Total	1,793	1,801	1,795	1,721	1,683	1,679	1,655	1,653
ATM	6,704	6,629	6,408	5,785	5,589	5,547	5,450	5,179

Disclaimer

Highlights

KB Financial Group

- Condensed Income Statement
- Condensed Balance Sheet
- Interest Income / Spread / Margin
- Fee and Commission Income
- Other Operating Income
- Provision for Credit Losses
- General & Administrative Expenses
- Asset Quality
- Capital Adequacy
- Organizational Structure
- Employees / Branches

Credit Ratings

KB Kookmin Bank

KB Securities

KB Insurance

KB Kookmin Card

Prudential Life Insurance

Other Subsidiaries

Contacts

- As of Dec. 31, 2021

	Long-Term	Short-Term	Outlook	Last Updated
Moody's	A1	Prime-1	Stable	2019.6.24
S&P	A	A-1	Stable	2019.8.26

Note) Rating for holding company

Disclaimer

Highlights

KB Financial Group

KB Kookmin Bank

Condensed Income Statement

Condensed Balance Sheet

Interest Income / Spread / Margin

Fee and Commission Income

Other Operating Income

Provision for Credit Losses

General & Administrative Expenses

Loans / Deposits

Asset Quality

Delinquency

Capital Adequacy

Credit Ratings

Housing Price Index

KB Securities

KB Insurance

KB Kookmin Card

Prudential Life Insurance

Other Subsidiaries

Contacts

(bn Won)	1Q20	2Q20	3Q20	4Q20	1Q21	2Q21	3Q21	4Q21(E)
Net interest income	1,637.5	1,638.2	1,717.2	1,761.9	1,809.0	1,888.2	1,962.2	2,069.1
Net fee and commission income	285.8	257.2	270.2	254.7	316.9	281.2	291.3	298.5
Net other operating income(expenses)	-126.9	135.8	-18.8	23.9	-93.3	-86.1	-152.2	-145.3
Gross operating income	1,796.4	2,031.2	1,968.6	2,040.5	2,032.6	2,083.3	2,101.3	2,222.3
General & administrative expenses	887.2	988.1	939.9	1,386.1	1,024.6	987.5	1,007.4	1,383.2
Operating profit before provision for credit losses	909.2	1,043.1	1,028.7	654.4	1,008.0	1,095.8	1,093.9	839.1
Provision for credit losses	76.6	139.4	117.4	150.9	56.6	70.8	61.9	333.5
Net operating profit	832.6	903.7	911.3	503.5	951.4	1,025.0	1,032.0	505.6
Net non-operating profit(loss)	-35.2	9.4	-43.4	49.9	19.9	-21.0	-1.6	-19.7
Share of profit(loss) of associates	-9.7	-4.8	-45.9	12.2	37.2	6.0	10.5	3.5
Net other non-operating income(expenses)	-25.5	14.2	2.5	37.7	-17.3	-27.0	-12.1	-23.2
Profit before income tax	797.4	913.1	867.9	553.4	971.3	1,004.0	1,030.4	485.9
Income tax expense	211.1	242.1	221.1	138.0	280.7	266.4	259.0	147.5
Profit for the period	586.3	671.0	646.8	415.4	690.6	737.6	771.4	338.4
Profit attributable to non-controlling interest	0.0	10.5	11.2	-0.4	2.1	3.5	-6.3	-52.1
Profit attributable to shareholders of the parent company	586.3	660.5	635.6	415.8	688.5	734.1	777.7	390.5

[Return to Home](#)
KB Kookmin Bank
Disclaimer
Highlights
KB Financial Group
KB Kookmin Bank
[Condensed Income Statement](#)
[Condensed Balance Sheet](#)
[Interest Income / Spread / Margin](#)
[Fee and Commission Income](#)
[Other Operating Income](#)
[Provision for Credit Losses](#)
[General & Administrative Expenses](#)
[Loans / Deposits](#)
[Asset Quality](#)
[Delinquency](#)
[Capital Adequacy](#)
[Credit Ratings](#)
[Housing Price Index](#)
KB Securities
KB Insurance
KB Kookmin Card
Prudential Life Insurance
Other Subsidiaries
Contacts

(bn Won)	Mar. 20	Jun. 20	Sep. 20	Dec. 20	Mar. 21	Jun. 21	Sep. 21	Dec. 21(E)
Total Assets	406,255.6	425,310.2	437,038.8	438,444.1	447,822.5	455,817.9	470,714.5	483,564.9
Cash and due from financial institutions	16,466.7	16,836.4	19,147.1	19,972.3	24,616.5	19,306.9	22,011.2	25,165.0
Financial assets at fair value through profit or loss	15,882.8	15,508.7	15,490.8	16,042.4	16,680.2	18,252.7	17,887.2	18,834.4
Derivative financial assets	4,057.6	2,999.4	2,790.4	4,456.7	2,827.4	2,399.9	3,520.5	2,965.6
Financial investments	52,501.3	53,504.7	56,638.4	58,286.5	54,916.9	57,519.0	62,987.9	63,744.9
Loans	305,864.0	320,801.9	329,070.9	327,332.5	332,487.6	342,258.5	347,876.2	361,144.7
(Allowances for loan losses)	-1,342.2	-1,440.9	-2,171.1	-2,186.8	-2,194.5	-2,191.6	-2,199.5	-2,426.9
Investments in associates	521.1	642.7	543.4	441.3	328.0	341.6	364.8	391.0
Tangible assets	4,248.3	4,255.0	4,673.2	4,557.7	4,511.6	4,465.2	4,467.3	4,496.3
Goodwill & Intangible assets	278.2	704.3	824.8	962.7	973.1	987.8	1,002.4	1,028.5
Current income tax assets	14.2	17.1	45.3	47.8	44.3	47.2	59.0	61.3
Deferred income tax assets	2.4	26.0	49.1	58.3	68.8	81.6	98.9	149.9
Other assets	6,419.0	10,014.0	7,765.4	6,285.9	10,368.1	10,157.5	10,439.1	5,583.3
Total Liabilities	377,633.3	395,987.2	407,526.1	408,036.0	417,648.3	424,785.6	437,972.4	450,676.0
Financial liabilities at fair value through profit or loss	73.2	78.9	85.2	141.3	99.4	106.4	149.1	112.7
Deposits	311,201.4	321,097.0	330,971.7	330,352.5	333,142.4	339,502.2	348,723.8	363,141.4
Debts	22,666.9	26,177.1	26,773.1	26,870.8	28,248.7	28,769.4	30,214.5	32,523.2
Debentures	20,970.8	22,164.1	24,520.4	26,969.6	26,103.7	27,136.4	29,483.5	29,718.7
Derivative financial liabilities	3,828.5	2,838.5	2,624.9	4,282.4	2,607.0	2,214.8	3,335.6	2,749.4
Net defined benefit liabilities	217.3	258.1	312.4	165.4	205.6	244.0	285.3	155.3
Provisions	311.6	340.0	354.6	388.0	397.3	415.4	414.4	426.9
Accrued expenses payables	2,998.3	3,105.9	3,230.6	2,805.0	2,585.1	2,557.2	2,687.7	2,668.6
Other liabilities	15,365.3	19,927.6	18,653.2	16,061.0	24,259.1	23,839.8	22,678.5	19,179.8
Total Equity	28,622.3	29,323.0	29,512.7	30,408.1	30,174.1	31,032.4	32,742.2	32,888.9
Share capital	2,021.9	2,021.9	2,021.9	2,021.9	2,021.9	2,021.9	2,021.9	2,021.9
Hybrid financial instrument	574.5	574.5	574.5	574.5	574.5	574.5	574.5	574.5
Capital surplus	5,219.7	4,808.5	4,808.5	4,808.5	4,808.5	4,808.5	5,026.5	5,025.3
Accumulated other comprehensive income	-103.9	-45.2	-21.5	494.4	675.9	811.1	1,766.7	1,395.2
Retained earnings	20,910.1	21,811.1	21,827.7	22,243.6	21,816.4	22,536.9	23,280.7	23,660.7
Treasury shares	0.0	0.0	0.0	0.0	0.0	0.0	0.0	0.0
Non-controlling interest	0.0	152.2	301.6	265.2	276.9	279.5	71.9	211.3

Disclaimer
Highlights
KB Financial Group
KB Kookmin Bank
[Condensed Income Statement](#)
[Condensed Balance Sheet](#)
[Interest Income / Spread / Margin](#)
[Fee and Commission Income](#)
[Other Operating Income](#)
[Provision for Credit Losses](#)
[General & Administrative Expenses](#)
[Loans / Deposits](#)
[Asset Quality](#)
[Delinquency](#)
[Capital Adequacy](#)
[Credit Ratings](#)
[Housing Price Index](#)
KB Securities
KB Insurance
KB Kookmin Card
Prudential Life Insurance
Other Subsidiaries
Contacts

(bn Won)	1Q20	2Q20	3Q20	4Q20	1Q21	2Q21	3Q21	4Q21(E)
Interest Income	2,631.4	2,638.8	2,576.0	2,610.0	2,543.6	2,570.5	2,669.1	2,891.2
Due from financial institutions	14.3	8.5	6.4	7.7	7.3	6.5	5.3	6.4
Financial Investments	274.1	246.0	224.8	229.4	221.5	211.3	233.6	253.7
Loans	2,277.2	2,363.8	2,295.2	2,317.6	2,261.5	2,296.2	2,373.4	2,559.8
Other	65.8	20.5	49.6	55.3	53.3	56.5	56.8	71.3
Interest Expense	993.9	1,000.6	858.8	848.1	734.6	682.3	706.9	822.1
Deposits	781.6	778.3	669.9	656.1	552.6	500.0	520.3	606.3
Debts & Debentures	190.3	207.4	177.0	178.2	169.2	169.2	171.2	195.7
Other	22.0	14.9	11.9	13.8	12.8	13.1	15.4	20.1
Net Interest Income	1,637.5	1,638.2	1,717.2	1,761.9	1,809.0	1,888.2	1,962.2	2,069.1

Bank Net Interest Margin

(bn Won)	1Q20	2Q20	3Q20	4Q20	1Q21	2Q21	3Q21	4Q21(E)
NIM (Quarterly)	1.56%	1.50%	1.49%	1.51%	1.56%	1.56%	1.58%	1.61%
NIM (Cumulative)	1.56%	1.53%	1.51%	1.51%	1.56%	1.56%	1.57%	1.58%

Interest Spread / Margin

(bn Won)	1Q20	2Q20	3Q20	4Q20	1Q21	2Q21	3Q21	4Q21(E)
Interest earning assets ¹⁾	350,301.4	368,255.6	374,968.5	381,904.1	382,201.9	387,076.3	399,176.4	413,968.2
Interest earned on the assets ²⁾	2,440.7	2,371.8	2,267.1	2,214.7	2,154.4	2,175.5	2,262.3	2,457.6
Yield	2.80%	2.59%	2.41%	2.31%	2.29%	2.25%	2.25%	2.36%
Interest bearing liabilities ¹⁾	339,398.4	359,172.2	364,740.2	371,686.2	372,305.1	377,798.7	389,588.2	404,871.9
Interest paid on the liabilities ³⁾	1,078.8	1,002.1	864.1	768.8	688.6	665.8	675.5	782.8
Yield	1.28%	1.12%	0.94%	0.82%	0.75%	0.71%	0.69%	0.77%
Interest spread	1.52%	1.47%	1.46%	1.48%	1.54%	1.55%	1.56%	1.59%
Net Interest Margin	1.56%	1.50%	1.49%	1.51%	1.56%	1.56%	1.58%	1.61%

1) Average balance based on separate financial statement

2) Interest income - credit guarantee fee

3) Interest expense + deposit insurance fee

[Return to Home](#)
KB Kookmin Bank
Disclaimer
Highlights
KB Financial Group
KB Kookmin Bank
[Condensed Income Statement](#)
[Condensed Balance Sheet](#)
[Interest Income / Spread / Margin](#)
[Fee and Commission Income](#)
[Other Operating Income](#)
[Provision for Credit Losses](#)
[General & Administrative Expenses](#)
[Loans / Deposits](#)
[Asset Quality](#)
[Delinquency](#)
[Capital Adequacy](#)
[Credit Ratings](#)
[Housing Price Index](#)
KB Securities
KB Insurance
KB Kookmin Card
Prudential Life Insurance
Other Subsidiaries
Contacts

(bn Won)	1Q20	2Q20	3Q20	4Q20	1Q21	2Q21	3Q21	4Q21(E)
Trust Fee	74.7	35.2	60.3	63.4	101.2	70.4	73.1	63.0
Fee and Commission	211.1	222.0	209.9	191.3	215.7	210.8	218.2	235.5
Fees from credit cards	-6.2	-6.0	-7.1	-7.3	-4.9	-7.2	-7.2	-9.4
Guarantee fees	11.8	11.5	12.0	11.6	11.1	10.9	11.8	12.8
Other commissions in Won	191.1	193.2	187.3	159.8	185.3	180.6	187.2	205.0
Commissions received as agency	77.8	85.0	85.8	72.3	64.9	75.3	75.2	70.9
Commissions received on represent securities	35.9	37.5	39.9	40.2	45.1	37.2	35.3	29.4
Commissions received on banking business	51.6	48.0	48.3	48.3	47.0	47.1	46.6	47.4
Commissions received on loan business	22.9	20.7	21.8	20.1	21.1	18.9	17.7	15.8
Others	2.9	2.0	-8.5	-21.1	7.2	2.1	12.4	41.5
Other commissions in foreign currency	14.4	23.3	17.7	27.2	24.2	26.5	26.4	27.1
Net Fee and Commission Income	285.8	257.2	270.2	254.7	316.9	281.2	291.3	298.5

Disclaimer

Highlights

KB Financial Group

KB Kookmin Bank

Condensed Income Statement

Condensed Balance Sheet

Interest Income / Spread / Margin

Fee and Commission Income

Other Operating Income

Provision for Credit Losses

General & Administrative Expenses

Loans / Deposits

Asset Quality

Delinquency

Capital Adequacy

Credit Ratings

Housing Price Index

KB Securities

KB Insurance

KB Kookmin Card

Prudential Life Insurance

Other Subsidiaries

Contacts

(bn Won)	1Q20	2Q20	3Q20	4Q20	1Q21	2Q21	3Q21	4Q21(E)
Net gain/loss on securities	76.9	231.3	86.5	108.4	58.0	84.7	32.5	-26.8
Net gain/loss on FVPL securities ¹⁾	-38.5	174.2	56.0	100.3	-4.0	62.3	29.7	43.6
Net gain/loss on FVOCI securities ²⁾	115.4	57.1	30.5	8.1	62.0	22.4	2.8	-70.4
Net gain/loss on sales	91.2	54.7	29.6	5.8	44.5	22.0	2.7	-70.3
Impairment loss	0.0	0.0	0.0	0.0	-0.1	0.1	0.1	0.1
Others	24.2	2.4	0.9	2.3	17.6	0.3	0.0	0.0
Net gain/loss on derivatives & foreign currency translation	-17.5	93.8	107.8	137.7	64.2	41.4	9.3	102.7
Other operating income	-186.3	-189.3	-213.0	-222.3	-215.5	-212.2	-194.0	-221.2
Deposit insurance fees & credit guarantee fees	-200.6	-208.4	-210.4	-217.5	-217.9	-223.0	-208.0	-224.1
Net gain/loss on sale of loans	19.6	17.5	7.1	39.2	5.6	21.8	4.3	6.8
Others	-5.3	1.6	-9.7	-44.0	-3.2	-11.0	9.7	-3.9
Net other operating income	-126.9	135.8	-18.7	23.8	-93.3	-86.1	-152.2	-145.3

1) Financial assets(liabilities) at fair value through profit or loss

2) Financial assets(liabilities) at fair value through other comprehensive income

[Return to Home](#)
KB Kookmin Bank
Disclaimer
Highlights
KB Financial Group
KB Kookmin Bank
[Condensed Income Statement](#)
[Condensed Balance Sheet](#)
[Interest Income / Spread / Margin](#)
[Fee and Commission Income](#)
[Other Operating Income](#)
[Provision for Credit Losses](#)
[General & Administrative Expenses](#)
[Loans / Deposits](#)
[Asset Quality](#)
[Delinquency](#)
[Capital Adequacy](#)
[Credit Ratings](#)
[Housing Price Index](#)
KB Securities
KB Insurance
KB Kookmin Card
Prudential Life Insurance
Other Subsidiaries
Contacts

(bn Won)	1Q20	2Q20	3Q20	4Q20	1Q21	2Q21	3Q21	4Q21(E)
Provision for loan losses	82.8	102.7	128.3	118.0	44.1	71.2	62.9	301.5
Provision for acceptances and guarantees	-0.1	-7.5	-18.4	12.5	28.3	15.6	4.5	9.0
Provision for undrawn commitments	-6.3	45.3	5.9	20.2	-14.1	-18.4	-5.5	24.6
Provision for financial guarantees & contracts	0.2	-1.1	1.6	0.2	-1.7	2.4	0.0	-1.6
Provision for Credit Losses	76.6	139.4	117.4	150.9	56.6	70.8	61.9	333.5

Credit Cost Ratio

(bn Won)	1Q20	2Q20	3Q20	4Q20	1Q21	2Q21	3Q21	4Q21(E)
Total Outstanding Credit	302,292.4	307,691.5	312,718.4	315,280.9	317,098.4	322,509.9	335,327.0	343,459.7
Household	152,923.0	154,414.0	158,187.0	162,208.9	163,238.8	164,620.2	170,159.9	170,474.0
Corporate	149,369.4	153,277.5	154,531.4	153,072.1	153,859.6	157,889.7	165,167.1	172,985.8
Provision for Loan Losses	78.7	93.4	107.5	110.5	66.2	84.5	37.4	176.5
Household	67.4	90.0	44.6	55.4	27.2	29.5	14.4	52.0
Corporate	11.3	3.4	62.9	55.1	39.0	55.0	23.0	124.5
Quarterly Credit Cost	0.11%	0.12%	0.14%	0.14%	0.08%	0.11%	0.05%	0.21%
Household	0.18%	0.24%	0.11%	0.14%	0.07%	0.07%	0.03%	0.12%
Corporate	0.03%	0.01%	0.16%	0.14%	0.10%	0.14%	0.06%	0.29%
Cumulative Credit Cost	0.11%	0.12%	0.12%	0.13%	0.08%	0.10%	0.08%	0.11%
Household	0.18%	0.21%	0.18%	0.17%	0.07%	0.07%	0.06%	0.07%
Corporate	0.03%	0.02%	0.07%	0.09%	0.10%	0.12%	0.10%	0.15%

[Return to Home](#)

KB Kookmin Bank

Disclaimer

Highlights

KB Financial Group

KB Kookmin Bank

Condensed Income Statement
 Condensed Balance Sheet
 Interest Income / Spread / Margin
 Fee and Commission Income
 Other Operating Income
 Provision for Credit Losses

General & Administrative Expenses

Loans / Deposits

Asset Quality

Delinquency

Capital Adequacy

Credit Ratings

Housing Price Index

KB Securities

KB Insurance

KB Kookmin Card

Prudential Life Insurance

Other Subsidiaries

Contacts

(bn Won)	1Q20	2Q20	3Q20	4Q20	1Q21	2Q21	3Q21	4Q21(E)
Employee Benefits	554.2	641.9	596.7	955.3	674.4	609.9	637.0	905.1
Post-employment benefits	41.6	42.9	42.5	42.2	41.2	42.7	41.6	45.1
Termination benefits	0.1	0.0	0.0	302.0	-3.4	0.0	0.0	269.9
Salaries & employee benefits	357.7	393.0	386.8	481.0	423.8	433.5	433.8	442.4
Others	154.8	206.0	167.4	130.1	212.8	133.7	161.6	147.7
Depreciation and Amortization	140.6	129.5	139.7	159.9	134.6	122.8	133.9	146.3
Tangible assets	119.1	105.7	116.8	128.4	101.1	100.7	104.4	115.4
Intangible assets	20.7	22.7	21.9	30.8	33.3	22.3	29.5	30.9
Others	0.8	1.1	1.0	0.7	0.2	-0.2	0.0	0.0
Other General and Administrative Expenses	192.4	216.7	203.5	270.9	215.6	254.8	236.5	331.8
Occupancy, furniture & equipment expenses	168.9	174.5	180.8	248.5	195.3	214.8	212.4	310.9
Taxes	23.5	42.2	22.7	22.4	20.3	40.0	24.1	20.9
General & Administrative Expenses	887.2	988.1	939.9	1,386.1	1,024.6	987.5	1,007.4	1,383.2
Cost to Income Ratio(CIR)								
(bn Won)	1Q20	2Q20	3Q20	4Q20	1Q21	2Q21	3Q21	4Q21(E)
Quarterly CIR	49.4%	48.6%	47.7%	67.9%	50.4%	47.4%	47.9%	62.2%
Cumulative CIR	49.4%	49.0%	48.6%	53.6%	50.4%	48.9%	48.6%	52.2%
Gross operating income	1,796.4	2,031.2	1,968.6	2,040.5	2,032.6	2,083.3	2,101.3	2,222.3
General & administrative expenses	887.2	988.1	939.9	1,386.1	1,024.6	987.5	1,007.4	1,383.2

Deposits in Won

(bn Won)	Mar. 20	Jun. 20	Sep.20	Dec. 20	Mar. 21	Jun. 21	Sep. 21	Dec. 21(E)
Core deposits	129,962.9	139,807.2	146,579.1	155,899.1	162,125.5	166,514.8	170,323.2	174,214.1
Savings deposits	156,866.9	153,635.5	153,044.2	144,157.4	139,251.5	140,352.9	143,105.7	150,049.3
Marketable deposits	3,615.5	4,437.0	3,297.0	2,473.9	2,726.0	3,919.5	4,479.3	4,118.2
Total	290,445.3	297,879.7	302,920.2	302,530.4	304,103.0	310,787.2	317,908.2	328,381.6

Deposit Portfolio

(bn Won)	Mar. 20	Jun. 20	Sep.20	Dec. 20	Mar. 21	Jun. 21	Sep. 21	Dec. 21(E)
Core deposits	44.7%	46.9%	48.4%	51.5%	53.3%	53.6%	53.6%	53.1%
Savings deposits	54.0%	51.6%	50.5%	47.7%	45.8%	45.1%	45.0%	45.6%
Marketable deposits	1.2%	1.5%	1.1%	0.8%	0.9%	1.3%	1.4%	1.3%
Total	100.0%	100.0%	100.0%	100.0%	100.0%	100.0%	100.0%	100.0%

Loan to Deposit Ratio¹⁾

(bn Won)	Mar. 20	Jun. 20	Sep.20	Dec. 20	Mar. 21	Jun. 21	Sep. 21	Dec. 21(E)
Loans in Won / Deposits in Won ²⁾	98.3%	100.4%	99.9%	101.7%	100.4%	100.4%	100.1%	100.2%

1) Based on new formula in accordance with FSS guideline from 2020

2) Based on monthly average balance including CD and covered bond, respectively up to 1% of deposits in Won

Disclaimer
Highlights
KB Financial Group
KB Kookmin Bank

[Condensed Income Statement](#)
[Condensed Balance Sheet](#)
[Interest Income / Spread / Margin](#)
[Fee and Commission Income](#)
[Other Operating Income](#)
[Provision for Credit Losses](#)
[General & Administrative Expenses](#)
[Loans / Deposits](#)

Asset Quality

[Delinquency](#)
[Capital Adequacy](#)
[Credit Ratings](#)
[Housing Price Index](#)

KB Securities
KB Insurance
KB Kookmin Card
Prudential Life Insurance
Other Subsidiaries
Contacts

(bn Won)	Mar. 20	Jun. 20	Sep. 20	Dec. 20	Mar. 21	Jun. 21	Sep. 21	Dec. 21(E)
Total Outstanding Credits	302,292.4	307,691.5	312,718.4	315,280.9	317,098.4	322,509.9	335,327.1	343,459.7
Normal	300,004.1	305,611.7	310,687.3	313,389.4	315,281.2	320,722.1	333,464.9	341,659.6
Precautionary	1,195.8	1,058.9	1,038.0	1,019.5	899.7	953.3	1,074.8	1,101.6
Substandard	608.7	619.1	603.9	498.2	526.1	503.0	489.6	429.9
Doubtful	348.0	269.5	257.9	270.1	278.4	224.2	201.0	169.9
Estimated Loss	135.8	132.3	131.3	103.7	113.0	107.3	96.8	98.7
NPL (A)	1,092.5	1,020.9	993.1	872.0	917.5	834.5	787.4	698.5
NPL Ratio	0.36%	0.33%	0.32%	0.28%	0.29%	0.26%	0.23%	0.20%
Loan loss reserves ¹⁾ (B)	1,384.6	1,372.7	1,394.3	1,440.5	1,438.1	1,441.6	1,435.2	1,573.9
Reserves for credit losses (C)	2,178.4	2,132.2	2,181.7	2,111.9	2,134.5	2,162.1	2,274.8	2,226.7
NPL Coverage Ratio(New)²⁾ (B/A)	126.73%	134.46%	140.39%	165.20%	156.74%	172.76%	182.27%	225.30%
NPL Coverage Ratio(Old)³⁾ [(B+C)/A]	326.13%	343.31%	360.07%	407.40%	389.38%	431.85%	471.18%	544.04%

1) Allowances for loan losses and acceptances & guarantees

2) Based on new formula in accordance with FSS guideline: Loan loss reserves / NPL (i.e. not including reserves for credit losses)

3) Including reserves for credit losses

Household

(bn Won)	Mar. 20	Jun. 20	Sep. 20	Dec. 20	Mar. 21	Jun. 21	Sep. 21	Dec. 21(E)
Total Outstanding Credits	152,923.0	154,414.0	158,187.0	162,208.9	163,238.8	164,620.2	170,159.9	170,474.0
Normal	152,172.6	153,729.8	157,532.2	161,604.9	162,660.9	164,088.0	169,645.5	169,965.0
Precautionary	384.6	339.9	336.6	324.1	312.2	302.3	304.3	309.7
Substandard	241.5	223.6	208.2	176.6	166.4	139.7	128.3	117.5
Doubtful	98.7	96.5	83.0	78.4	76.3	67.6	62.0	60.8
Estimated Loss	25.5	24.2	27.0	24.8	23.1	22.6	19.8	21.0
NPL	365.7	344.3	318.2	279.8	265.7	229.9	210.1	199.3
NPL Ratio	0.24%	0.22%	0.20%	0.17%	0.16%	0.14%	0.12%	0.12%
Loan loss reserves ¹⁾	493.9	531.8	523.9	525.7	516.4	516.9	512.6	562.0
Reserve for credit losses	1,232.8	1,204.8	1,243.8	1,269.5	1,284.0	1,286.5	1,338.6	1,293.1
NPL Coverage Ratio²⁾	135.05%	154.47%	164.64%	187.89%	194.32%	224.88%	243.96%	282.04%

1) Allowances for loan losses and acceptances & guarantees

2) Based on new formula in accordance with FSS guideline: Loan loss reserves / NPL (i.e. Reserves for credit losses is not included in the denominator)

Corporate

(bn Won)	Mar. 20	Jun. 20	Sep. 20	Dec. 20	Mar. 21	Jun. 21	Sep. 21	Dec. 21(E)
Total Outstanding Credits	149,369.4	153,277.5	154,531.4	153,072.1	153,859.6	157,889.7	165,167.1	172,985.8
Normal	147,831.5	151,881.9	153,155.1	151,784.5	152,620.3	156,634.1	163,819.4	171,694.6
Precautionary	811.1	719.0	701.3	695.4	587.5	651.0	770.5	791.9
Substandard	367.2	395.6	395.7	321.6	359.7	363.3	361.3	312.4
Doubtful	249.3	172.9	174.9	191.7	202.1	156.5	139.0	109.1
Estimated Loss	110.3	108.1	104.3	78.9	90.0	84.8	76.9	77.7
NPL	726.8	676.6	674.9	592.2	651.8	604.6	577.2	499.2
NPL Ratio	0.49%	0.44%	0.44%	0.39%	0.42%	0.38%	0.35%	0.29%
Loan loss reserves ¹⁾	890.7	840.9	870.4	914.8	921.7	924.7	922.5	1,011.9
Reserve for credit losses	945.5	927.4	937.9	842.4	850.6	875.7	936.2	933.5
NPL Coverage Ratio²⁾	122.55%	124.27%	128.96%	154.48%	141.41%	152.94%	159.81%	202.65%

1) Allowances for loan losses and acceptances & guarantees

2) Based on new formula in accordance with FSS guideline: Loan loss reserves / NPL (i.e. Reserves for credit losses is not included in the denominator)

Write-offs / NPL Sales

(bn Won)	Mar. 20	Jun. 20	Sep. 20	Dec. 20	Mar. 21	Jun. 21	Sep. 21	Dec. 21(E)
Write-offs	121.7	141.5	144.7	129.9	106.8	100.8	102.8	86.9
Household	81.5	85.4	81.8	78.0	64.2	57.6	56.0	49.9
Corporate	40.2	56.1	62.9	51.9	42.6	43.2	46.7	37.0
NPL Sales	0.0	86.7	0.0	128.3	0.0	71.5	0.0	68.0
Household	0.0	31.1	0.0	19.0	0.0	14.2	0.0	13.0
Corporate	0.0	55.6	0.0	109.3	0.0	57.3	0.0	55.0
Total	121.7	228.2	144.7	258.2	106.8	172.3	102.8	154.9

Recoveries from Written-offs

(bn Won)	Mar. 20	Jun. 20	Sep. 20	Dec. 20	Mar. 21	Jun. 21	Sep. 21	Dec. 21(E)
Household	30.6	36.7	30.5	27.2	28.1	31.0	38.0	49.9
Corporate	14.2	20.6	18.9	96.6	30.5	12.1	12.9	26.3
Total	44.8	57.3	49.4	123.8	58.6	43.1	50.9	76.2

Disclaimer

Highlights

KB Financial Group

KB Kookmin Bank

- Condensed Income Statement
- Condensed Balance Sheet
- Interest Income / Spread / Margin
- Fee and Commission Income
- Other Operating Income
- Provision for Credit Losses
- General & Administrative Expenses
- Loans / Deposits
- Asset Quality
- Delinquency
- Capital Adequacy
- Credit Ratings
- Housing Price Index

KB Securities

KB Insurance

KB Kookmin Card

Prudential Life Insurance

Other Subsidiaries

Contacts

Delinquency Ratio

	Mar. 20	Jun. 20	Sep. 20	Dec. 20	Mar. 21	Jun. 21	Sep. 21	Dec. 21(€)
Household	0.29%	0.25%	0.22%	0.20%	0.18%	0.15%	0.15%	0.14%
Mortgage	0.23%	0.20%	0.18%	0.16%	0.15%	0.13%	0.12%	0.11%
General	0.35%	0.30%	0.27%	0.24%	0.22%	0.18%	0.18%	0.17%
Corporate	0.19%	0.18%	0.17%	0.14%	0.17%	0.13%	0.13%	0.11%
SME	0.24%	0.22%	0.20%	0.15%	0.18%	0.15%	0.14%	0.11%
Large Corporation	0.05%	0.03%	0.06%	0.08%	0.16%	0.06%	0.11%	0.10%
Total	0.24%	0.21%	0.20%	0.17%	0.18%	0.14%	0.14%	0.12%

- delinquent for 1 month and over

Loan Amount

(bn Won)	Mar. 20	Jun. 20	Sep. 20	Dec. 20	Mar. 21	Jun. 21	Sep. 21	Dec. 21(€)
Household	152,923.0	154,414.0	158,187.0	162,208.9	163,238.8	164,620.2	170,159.9	170,474.0
Mortgage	82,096.5	82,122.2	83,317.2	85,969.4	86,870.8	86,917.0	90,898.9	92,144.4
General	70,826.5	72,291.8	74,869.8	76,239.5	76,368.0	77,703.2	79,261.0	78,329.6
Corporate	142,078.8	146,734.2	147,981.7	146,665.6	148,036.0	152,017.6	159,249.0	166,932.6
SME	109,352.9	114,601.0	116,014.2	116,748.0	118,099.0	121,970.0	125,854.8	129,544.2
Large Corporation	32,725.9	32,133.2	31,967.4	29,917.6	29,937.0	30,047.7	33,394.2	37,388.4
Total	295,001.8	301,148.2	306,168.7	308,874.5	311,274.8	316,637.8	329,408.9	337,406.6

Delinquent Amount

(bn Won)	Mar. 20	Jun. 20	Sep. 20	Dec. 20	Mar. 21	Jun. 21	Sep. 21	Dec. 21(€)
Household	437.6	382.2	352.2	317.8	294.9	253.2	252.1	236.5
Mortgage	189.7	165.6	148.1	137.2	129.1	110.0	107.9	104.3
General	247.9	216.6	204.1	180.6	165.8	143.2	144.2	132.2
Corporate	273.1	262.9	250.4	201.7	254.0	201.8	214.1	177.1
SME	257.0	253.7	232.3	178.1	207.2	182.9	176.3	141.2
Large Corporation	16.1	9.2	18.1	23.6	46.8	18.9	37.8	35.9
Total	710.7	645.1	602.6	519.5	548.9	455.0	466.3	413.6

Delinquent Amount by Period

(bn Won)	Mar. 20	Jun. 20	Sep. 20	Dec. 20	Mar. 21	Jun. 21	Sep. 21	Dec. 21(E)
1~3 months	284.5	266.4	217.5	231.2	190.1	197.8	187.6	187.1
3~6 months	194.9	193.0	173.4	142.7	184.4	111.8	132.0	93.2
6~12 months	139.2	93.5	128.6	70.6	97.4	78.8	79.2	67.0
Over 12 months	92.1	92.1	83.1	75.0	77.0	66.6	67.4	66.3
Total	710.7	645.0	602.6	519.5	548.9	455.0	466.3	413.6

Delinquency Ratio by Industry (Corporate Loan)

	Mar. 20	Jun. 20	Sep. 20	Dec. 20	Mar. 21	Jun. 21	Sep. 21	Dec. 21(E)
Agriculture, forestry and fishing	0.07%	0.05%	0.01%	0.27%	4.32%	0.17%	0.39%	0.02%
Mining and quarrying	0.00%	0.00%	0.00%	1.95%	1.64%	0.26%	0.00%	0.00%
Manufacturing	0.25%	0.26%	0.30%	0.21%	0.25%	0.21%	0.18%	0.16%
Electricity, gas, steam and water supply	0.00%	0.01%	0.01%	0.01%	0.02%	0.01%	0.01%	0.00%
Sewage, waste management, materials recovery and remediation activities	0.45%	0.31%	0.09%	0.09%	0.06%	0.06%	0.01%	0.03%
Construction	0.48%	0.32%	0.24%	0.25%	0.23%	0.14%	0.17%	0.18%
Wholesale and retail trade	0.25%	0.21%	0.18%	0.14%	0.14%	0.15%	0.14%	0.10%
Transportation	0.12%	0.24%	0.09%	0.04%	0.06%	0.03%	0.03%	0.02%
Accommodation and food service activities	0.25%	0.14%	0.11%	0.11%	0.18%	0.16%	0.18%	0.08%
Information and communications	0.34%	0.20%	0.28%	0.53%	0.60%	0.59%	0.54%	0.51%
Financial and insurance activities	0.00%	0.00%	0.00%	0.00%	0.00%	0.00%	0.00%	0.00%
Real estate activities and renting and leasing	0.10%	0.12%	0.08%	0.08%	0.10%	0.04%	0.04%	0.03%
Professional, scientific and technical activities	0.12%	0.17%	0.06%	0.08%	0.04%	0.06%	0.07%	0.06%
Business facilities management and business	0.11%	0.20%	0.02%	0.07%	0.07%	0.12%	0.18%	0.12%
Public administration and defence ; compulsory social security	0.00%	0.00%	0.00%	0.00%	0.00%	0.00%	0.00%	0.00%
Education	0.21%	0.10%	0.10%	0.04%	0.13%	0.07%	0.07%	0.05%
Human health and social work activities	0.14%	0.05%	0.11%	0.06%	0.06%	0.07%	0.30%	0.26%
Arts, sports and recreation related services	0.12%	0.22%	0.17%	0.05%	0.10%	0.04%	0.03%	0.03%
Membership organizations, repair and other personal services	0.07%	0.09%	0.08%	0.07%	0.19%	0.12%	0.12%	0.06%
Others	0.03%	0.05%	0.05%	0.00%	0.00%	0.00%	0.01%	0.02%
Total	0.19%	0.18%	0.17%	0.14%	0.17%	0.13%	0.13%	0.11%

- Reclassified based on Korean Standard Industrial Classification (as amended in July 2017)

Disclaimer

Highlights

KB Financial Group

KB Kookmin Bank

- Condensed Income Statement
- Condensed Balance Sheet
- Interest Income / Spread / Margin
- Fee and Commission Income
- Other Operating Income
- Provision for Credit Losses
- General & Administrative Expenses
- Loans / Deposits
- Asset Quality
- Delinquency
- Capital Adequacy**
- Credit Ratings
- Housing Price Index

KB Securities

KB Insurance

KB Kookmin Card

Prudential Life Insurance

Other Subsidiaries

Contacts

(bn Won)	Mar. 20	Jun. 20	Sep. 20	Dec. 20	Mar. 21	Jun. 21	Sep. 21	Dec. 21(E)
Tier 1 Capital	27,980.1	28,159.2	28,287.2	28,234.3	28,883.7	29,714.8	31,599.6	30,491.1
Common Equity Tier 1	27,405.6	27,584.6	27,712.7	27,659.8	28,309.2	29,140.3	31,025.1	29,916.6
Paid in capital	2,021.9	2,021.9	2,021.9	2,021.9	2,021.9	2,021.9	2,021.9	2,021.9
Capital surplus	4,604.4	4,604.4	4,604.4	4,604.4	4,604.4	4,604.4	4,604.4	4,604.4
Retained earnings	20,910.0	21,811.1	21,827.7	22,243.6	21,816.5	22,536.9	23,280.7	23,653.5
Others	511.4	159.0	182.5	698.5	880.0	1,015.1	2,188.8	1,823.2
Deductions	-642.1	-1,011.7	-923.8	-1,908.6	-1,013.6	-1,038.0	-1,070.7	-2,186.5
Additional Tier 1	574.5	574.5	574.5	574.5	574.5	574.5	574.5	574.5
Tier 2 Capital	2,343.0	2,872.8	3,346.6	4,320.4	4,668.6	4,995.3	4,895.5	5,081.1
Provisions	64.0	182.5	268.5	260.1	258.7	304.2	245.9	247.4
Subordinated debt	2,279.0	2,690.3	3,078.1	4,060.3	4,409.9	4,691.1	4,649.6	4,833.7
Others	0.0	0.0	0.0	0.0	0.0	0.0	0.0	0.0
Total BIS Capital	30,323.1	31,032.0	31,633.9	32,554.7	33,552.3	34,710.1	36,495.2	35,572.2
Risk Weighted Assets	202,054.3	215,730.1	183,907.7	183,148.3	181,436.9	183,445.8	195,347.7	203,726.3
BIS Capital Adequacy Ratio	15.01%	14.38%	17.20%	17.78%	18.49%	18.92%	18.68%	17.46%
Tier 1	13.85%	13.05%	15.38%	15.42%	15.92%	16.20%	16.18%	14.97%
Common Equity Tier 1	13.56%	12.79%	15.07%	15.10%	15.60%	15.88%	15.88%	14.68%
Tier 2	1.16%	1.33%	1.82%	2.36%	2.57%	2.72%	2.51%	2.49%

1) Based on BASEL III (calculated in accordance with the early adoption of Basel III Credit Risk Framework from September 2020)

Disclaimer

Highlights

KB Financial Group

KB Kookmin Bank

- Condensed Income Statement
- Condensed Balance Sheet
- Interest Income / Spread / Margin
- Fee and Commission Income
- Other Operating Income
- Provision for Credit Losses
- General & Administrative Expenses
- Loans / Deposits
- Asset Quality
- Delinquency
- Capital Adequacy
- Credit Ratings**
- Housing Price Index

KB Securities

KB Insurance

KB Kookmin Card

Prudential Life Insurance

Other Subsidiaries

Contacts

- As of December 31, 2021

	Long-Term	Short-Term	Outlook	Last Updated
Moody's	Aa3	Prime-1	Stable	2018.12.17
S&P	A+	A-1	Stable	2016.08.08
Fitch	A	F1+	Stable	2021.7.29

Disclaimer

Highlights

KB Financial Group

KB Kookmin Bank

- Condensed Income Statement
- Condensed Balance Sheet
- Interest Income / Spread / Margin
- Fee and Commission Income
- Other Operating Income
- Provision for Credit Losses
- General & Administrative Expenses
- Loans / Deposits
- Asset Quality
- Delinquency
- Capital Adequacy
- Credit Ratings

Housing Price Index

KB Securities

KB Insurance

KB Kookmin Card

Prudential Life Insurance

Other Subsidiaries

Contacts

Housing price index

('19.1=100) Year	National index	Seoul area index
2007	77.5	78.6
2008	79.9	82.6
2009	81.1	84.8
2010	82.6	83.8
2011	88.3	84.0
2012	88.3	81.6
2013	88.6	80.6
2014	90.5	81.2
2015	94.4	84.7
2016	95.7	87.3
2017	96.9	90.5
2018	100.0	100.0
2019	100.2	102.6
Mar. 2020	101.5	103.9
Jun. 2020	102.4	104.6
Sep. 2020	104.9	109.3
Dec. 2020	108.6	113.5
Jan. 2021	109.9	115.0
Feb. 2021	111.4	116.3
Mar. 2021	112.8	117.4
Jun. 2021	116.6	120.4
Sep. 2021	121.6	125.0
Dec. 2021	124.8	127.7

Jeonse price index

('19.1=100) Year	National index	Seoul area index
2007	64.5	60.3
2008	65.6	61.0
2009	67.8	64.7
2010	72.7	68.8
2011	81.6	76.3
2012	84.5	77.7
2013	89.3	83.1
2014	92.7	86.7
2015	97.9	93.6
2016	99.5	96.0
2017	99.9	97.7
2018	100.0	100.0
2019	99.5	100.7
Mar. 2020	100.0	101.3
Jun. 2020	100.5	101.8
Sep. 2020	102.3	105.3
Dec. 2020	106.0	110.9
Jan. 2021	106.9	112.2
Feb. 2021	107.7	113.3
Mar. 2021	108.5	114.0
Jun. 2021	110.7	116.4
Sep. 2021	114.0	119.8
Dec. 2021	116.0	121.8

[Disclaimer](#)
[Highlights](#)
[KB Financial Group](#)
[KB Kookmin Bank](#)
[KB Securities](#)
[Condensed Income Statement](#)
[Condensed Balance Sheet](#)
[Key Indicators](#)
[KB Insurance](#)
[KB Kookmin Card](#)
[Prudential Life Insurance](#)
[Other Subsidiaries](#)
[Contacts](#)

(bn Won)	1Q20	2Q20	3Q20	4Q20	1Q21	2Q21	3Q21	4Q21(E)
Net interest income	124.2	120.2	132.7	133.5	133.6	145.0	141.5	136.3
Net fee and commission income	174.3	224.9	280.9	236.7	301.0	254.7	254.5	204.6
Net other operating income(expenses)	-124.6	91.6	26.5	21.1	76.7	17.1	53.2	-31.2
Gross operating income	173.9	436.7	440.1	391.3	511.3	416.8	449.2	309.7
General & administrative expenses	181.7	201.0	205.4	256.4	222.7	212.0	209.3	211.1
Operating profit before provision for credit losses	-7.8	235.7	234.7	134.9	288.6	204.8	239.9	98.6
Provision for credit losses	20.8	3.0	-0.3	0.3	0.9	3.1	5.7	8.8
Net operating profit	-28.6	232.7	235.0	134.6	287.7	201.7	234.2	89.8
Net non-operating profit(loss)	2.9	-23.6	47.4	-18.6	7.1	14.0	-2.5	-22.4
Share of profit(loss) of associates	0.3	0.8	0.3	2.2	4.0	15.5	-0.7	-4.3
Net other non-operating income(expenses)	2.6	-24.4	47.1	-20.8	3.1	-1.5	-1.8	-18.1
Profit before income tax	-25.7	209.1	282.4	116.0	294.8	215.7	231.7	67.4
Income tax expense	-4.3	58.9	72.7	28.9	73.7	62.4	62.9	16.4
Profit for the period	-21.4	150.2	209.7	87.1	221.1	153.3	168.8	51.0
Profit attributable to non-controlling interest	0.0	0.0	0.0	0.0	0.0	0.0	-0.1	0.0
Profit attributable to shareholders of the parent company	-21.4	150.2	209.7	87.1	221.1	153.3	168.9	51.0

* Financial information prior to 4Q16 represent financial results of KB Investment & Securities

[Return to Home](#)
[KB Securities](#)
Disclaimer
Highlights
KB Financial Group
KB Kookmin Bank
KB Securities
[Condensed Income Statement](#)
[Condensed Balance Sheet](#)
[Key Indicators](#)
KB Insurance
KB Kookmin Card
Prudential Life Insurance
Other Subsidiaries
Contacts

(bn Won)	Mar. 20	Jun. 20	Sep. 20	Dec. 20	Mar. 21	Jun. 21	Sep. 21	Dec. 21(E)
Total Assets	54,009.3	56,606.6	55,843.0	57,570.7	56,757.5	56,893.6	57,203.9	55,494.0
Cash and due from financial institutions	5,880.3	4,832.4	4,637.4	3,889.1	3,968.4	3,317.6	4,233.0	3,834.0
Financial assets at fair value through profit or loss	28,564.9	29,996.9	31,048.6	33,415.5	31,996.5	33,873.0	31,395.1	34,182.3
Derivative financial assets	1,156.4	979.5	784.6	928.7	877.5	771.1	836.8	817.5
Financial investments	3,334.5	3,531.9	3,994.0	3,905.0	4,155.0	4,274.6	4,367.1	3,839.9
Loans	5,816.2	6,838.4	6,872.3	6,644.8	6,478.6	6,718.2	7,508.9	7,186.3
(Allowances for loan losses)	-61.9	-65.5	-63.9	-61.4	-60.8	-62.1	-66.8	-74.7
Investments in associates	59.4	63.5	347.9	312.1	303.0	117.7	293.8	137.6
Tangible assets	1,790.1	1,787.1	1,446.1	1,422.9	1,440.1	1,427.3	1,557.3	1,553.0
Goodwill & Intangible assets	216.4	214.5	211.8	216.4	208.4	215.9	217.5	225.6
Current income tax assets	4.7	5.3	5.9	5.4	4.8	5.6	5.6	4.9
Deferred income tax assets	0.3	0.0	0.0	0.0	0.0	0.0	0.0	0.0
Other assets	7,186.1	8,357.1	6,494.4	6,830.8	7,325.2	6,172.6	6,788.8	3,712.9
Total Liabilities	49,389.5	51,802.4	50,844.7	52,516.5	51,595.0	51,573.4	51,770.8	50,008.4
Financial liabilities at fair value through profit or loss	12,668.7	13,290.4	13,185.5	11,668.8	12,650.7	11,649.7	12,592.8	11,975.3
Deposits	6,138.6	6,356.2	6,515.9	7,686.4	7,303.4	7,973.6	8,217.9	8,391.1
Debts	17,222.4	18,764.4	19,057.2	21,365.8	19,804.7	21,074.3	18,590.2	20,198.2
Debentures	3,746.1	4,012.1	4,120.8	3,663.4	3,794.6	3,956.1	4,812.7	4,451.2
Derivative financial liabilities	2,375.1	1,269.5	1,035.0	869.7	704.7	578.9	926.6	880.4
Net defined benefit liabilities	40.2	43.5	46.9	53.6	42.8	47.1	51.8	55.6
Provisions	20.2	52.7	38.4	82.9	72.9	69.8	69.6	106.2
Accrued expenses payables	189.0	189.2	202.8	295.5	262.4	242.1	276.4	315.9
Other liabilities	6,989.2	7,824.4	6,642.2	6,830.4	6,958.8	5,981.8	6,232.8	3,634.5
Total Equity	4,619.8	4,804.2	4,998.3	5,054.2	5,162.5	5,320.2	5,433.1	5,485.6
Share capital	1,439.9	1,439.9	1,439.9	1,439.9	1,439.9	1,439.9	1,439.9	1,439.9
Capital surplus	1,328.9	1,328.9	1,328.9	1,328.9	1,328.9	1,328.9	1,328.9	1,328.9
Accumulated other comprehensive income	111.4	145.6	130.0	98.8	116.0	117.2	131.0	132.6
Retained earnings	1,735.4	1,885.6	2,095.3	2,182.4	2,273.5	2,426.8	2,525.7	2,576.7
Non-controlling interest	0.3	0.3	0.3	0.3	0.3	3.5	3.7	3.6
Other equity	3.9	3.9	3.9	3.9	3.9	3.9	3.9	3.9

* Financial information prior to 4Q16 represent financial results of KB Investment & Securities

Disclaimer
Highlights
KB Financial Group
KB Kookmin Bank
KB Securities
KB Insurance
Condensed Income Statement
[Condensed Balance Sheet](#)
[Key Indicators](#)
[Direct Premiums](#)
[Loss & Expense Ratios](#)
[Monthly Initial Premiums](#)
KB Kookmin Card
Prudential Life Insurance
Other Subsidiaries
Contacts

(bn Won)	1Q20	2Q20	3Q20	4Q20	1Q21	2Q21	3Q21	4Q21(E)
Net interest income	154.4	152.3	157.8	151.5	153.4	154.3	157.8	159.7
Net fee and commission income	-40.7	-44.2	-42.8	-43.5	-41.3	-42.5	-44.5	-45.0
Net other operating income(expenses)	195.2	178.3	151.7	63.2	190.4	203.5	249.4	137.4
Gross operating income	308.9	286.4	266.7	171.2	302.5	315.3	362.7	252.1
General & administrative expenses	211.9	196.4	214.1	206.9	209.1	215.1	197.3	212.1
Operating profit before provision for credit losses	97.0	90.0	52.6	-35.7	93.4	100.2	165.4	40.0
Provision for credit losses	-2.5	-0.9	-2.9	-1.4	-0.1	3.3	-3.2	5.5
Net operating profit	99.5	90.9	55.5	-34.3	93.5	96.9	168.6	34.5
Net non-operating income	5.5	2.2	3.3	5.1	0.9	2.7	2.9	10.8
Share of profit(loss) of associates	0.0	0.0	0.0	0.0	0.0	0.0	0.0	-0.1
Net other non-operating income(expenses)	5.5	2.2	3.3	5.1	0.9	2.7	2.9	10.9
Profit before income tax	105.0	93.1	58.8	-29.2	94.4	99.6	171.5	45.3
Income tax expense	27.8	26.5	16.0	-6.5	25.6	25.4	45.1	12.6
Profit for the period	77.2	66.6	42.8	-22.7	68.8	74.2	126.4	32.7
Profit attributable to shareholders of the parent company	77.2	66.8	42.6	-22.7	68.8	74.1	126.3	32.6

Disclaimer
Highlights
KB Financial Group
KB Kookmin Bank
KB Securities
KB Insurance
[Condensed Income Statement](#)
[Condensed Balance Sheet](#)
[Key Indicators](#)
[Direct Premiums](#)
[Loss & Expense Ratios](#)
[Monthly Initial Premiums](#)
KB Kookmin Card
Prudential Life Insurance
Other Subsidiaries
Contacts

(bn Won)	Mar. 20	Jun. 20	Sep. 20	Dec. 20	Mar. 21	Jun. 21	Sep. 21	Dec. 21(E)
Total Assets	37,122.3	37,677.1	38,082.9	39,078.1	39,264.1	40,267.9	41,097.4	41,472.2
Cash and due from financial institutions	333.8	343.1	356.2	625.3	377.0	628.0	510.3	585.3
Financial assets at fair value through profit or loss	7,811.1	8,114.9	8,012.9	7,795.5	7,531.4	7,432.2	8,388.8	8,633.8
Derivative financial assets	6.2	10.5	28.6	128.8	52.4	40.4	4.4	7.9
Financial investments	13,214.9	13,368.1	13,937.2	14,078.8	14,457.8	14,775.4	14,547.4	14,666.8
Loans	7,434.3	7,476.8	7,333.3	7,550.9	7,759.2	8,246.7	8,297.5	8,313.8
(Allowances for loan losses)	-14.3	-16.4	-15.4	-17.6	-17.3	-19.9	-15.7	-19.9
Investments in associates	1.4	1.4	1.4	1.4	1.4	1.4	1.9	2.4
Tangible assets	882.0	881.8	875.3	868.7	878.9	881.0	878.0	809.1
Goodwill & Intangible assets	1,817.7	1,772.0	1,727.8	1,703.5	1,662.1	1,620.2	1,579.2	1,541.7
Current income tax assets	0.0	0.0	0.0	7.8	7.8	3.6	3.6	3.6
Deferred income tax assets	3.0	3.0	3.0	3.1	3.1	3.1	3.2	3.5
Other assets	5,617.9	5,705.5	5,807.2	6,314.3	6,533.0	6,635.9	6,883.1	6,904.3
Total Liabilities	33,143.5	33,620.1	33,968.8	35,086.5	35,432.2	36,315.9	36,979.6	37,329.0
Financial liabilities at fair value through profit or loss	0.0	0.0	0.0	0.0	0.0	0.0	0.0	0.0
Deposits	0.0	0.0	0.0	0.0	0.0	0.0	0.0	0.0
Debts	17.2	17.2	17.2	18.0	20.7	43.3	55.3	83.6
Debentures	0.0	0.0	0.0	0.0	0.0	378.0	378.0	378.1
Derivative financial liabilities	259.4	173.4	119.0	23.4	55.4	53.1	156.5	118.3
Net defined benefit liabilities	22.5	28.0	33.1	9.0	15.1	7.9	0.3	0.3
Provisions	27.8	24.3	25.2	26.8	26.0	23.0	24.6	27.0
Accrued expenses payables	114.6	114.1	112.7	125.4	127.2	165.6	153.3	163.8
Other liabilities	32,702.0	33,263.1	33,661.6	34,883.9	35,187.8	35,645.0	36,211.6	36,557.9
Total Equity	3,978.7	4,057.0	4,114.1	3,991.7	3,831.9	3,952.0	4,117.8	4,143.3
Share capital	33.3	33.3	33.3	33.3	33.3	33.3	33.3	33.3
Capital surplus	348.4	348.4	348.4	348.4	348.4	348.4	348.4	348.4
Accumulated other comprehensive income	218.9	230.1	244.7	145.1	-83.6	-37.7	-21.8	-31.8
Retained earnings	3,373.7	3,440.5	3,483.2	3,460.5	3,529.3	3,603.4	3,752.9	3,788.4
Non-controlling interest	4.4	4.7	4.5	4.4	4.5	4.6	5.0	5.0

[Return to Home](#)
KB Insurance
[Disclaimer](#)
[Highlights](#)
[KB Financial Group](#)
[KB Kookmin Bank](#)
[KB Securities](#)
[KB Insurance](#)
[Condensed Income Statement](#)
[Condensed Balance Sheet](#)
[Key Indicators](#)
[Direct Premium](#)
[Loss & Expense Ratio](#)
[Monthly Initial Premium](#)
[KB Kookmin Card](#)
[Prudential Life Insurance](#)
[Other Subsidiaries](#)
[Contacts](#)
Summarized Statement of Financial Position

(bn Won, %)	Mar. 20	Jun. 20	Sep. 20	Dec. 20	Mar. 21	Jun. 21	Sep. 21	Dec. 21(E)
Invested assets	29,714.0	30,229.3	30,571.2	30,988.3	31,072.2	31,991.2	32,617.0	32,956.1
Net investment yield (cumulative)	3.5	3.1	2.7	2.7	2.8	2.8	3.0	3.0
Total Assets	35,873.3	36,398.5	36,787.2	37,850.0	38,049.1	38,971.3	39,741.9	40,060.7
Policy reserves	28,189.2	28,778.8	29,230.2	29,895.8	30,366.9	30,809.5	31,275.0	31,545.7
Catastrophe reserves	856.9	875.7	893.2	904.2	916.5	929.7	961.1	977.8
Total Liabilities	32,656.2	33,116.1	33,458.6	34,618.0	34,983.9	35,794.4	36,448.5	36,759.1
Total Equities	3,217.1	3,282.4	3,328.6	3,232.0	3,065.3	3,176.9	3,293.4	3,301.6
Total Liabilities & Equities	35,873.3	36,398.5	36,787.2	37,850.0	38,049.1	38,971.3	39,741.9	40,060.7

Summarized Statement of Comprehensive Income (Cumulative)

(bn Won)	1Q20	2Q20	3Q20	4Q20	1Q21	2Q21	3Q21	4Q21(E)
Direct premium written	2,737.5	5,467.0	8,195.8	10,975.1	2,891.0	5,779.8	8,636.7	11,523.8
Net premium earned	2,334.8	4,704.2	7,109.6	9,577.0	2,498.2	5,058.1	7,660.0	10,298.1
Underwriting income	-170.1	-290.2	-442.2	-650.1	-117.6	-231.5	-332.8	-526.2
Investment income	255.8	449.3	647.5	844.3	212.0	436.8	709.1	947.0
Operating income	85.7	159.1	205.3	194.2	94.4	205.3	376.3	420.8
Ordinary income	86.6	157.7	203.3	191.8	91.2	197.2	363.5	386.3
Net Income	64.0	115.1	148.4	140.0	67.5	145.8	268.2	285.5

Capital Adequacy

(bn Won)	Mar. 20	Jun. 20	Sep. 20	Dec. 20	Mar. 21	Jun. 21	Sep. 21	Dec. 21(E)
RBC Ratio	183.5%	182.0%	183.1%	174.8%	163.3%	178.7%	181.8%	179.2%
Available capital	3,764.4	3,839.9	3,914.3	3,812.1	3,639.2	4,140.1	4,334.6	4,343.6
Required capital	2,051.7	2,109.7	2,138.0	2,181.3	2,228.0	2,316.6	2,384.0	2,424.3

Embedded Value

(bn Won)	1Q20	2Q20	3Q20	4Q20	1Q21	2Q21	3Q21	4Q21(E)
(A) Adjusted Net Worth (ANW)	3,958	4,163	4,249	3,854	3,256	3,363	3,455	3,381
(B) Value of In-Force Business (VIF)	2,224	2,486	2,667	2,942	3,371	3,755	4,092	4,438
Present Value of Future Profit	4,516	4,750	4,959	5,256	5,700	6,096	6,448	6,808
Cost of Capital	-2,292	-2,264	-2,292	-2,314	-2,329	-2,341	-2,356	-2,370
Value of New Business	203	225	255	282	295	287	255	270
Present Value of Future Profit	246	263	301	334	348	336	309	322
Cost of Capital	-42	-38	-46	-51	-53	-49	-54	-52
(A+B) Embedded Value (EV)	6,182	6,649	6,916	6,795	6,626	7,118	7,547	7,819

Note & Disclaimer

1. Embedded value and value of new business results of KB Insurance is for information purposes only and does not constitute an invitation or offer by any person to acquire, purchase or subscribe for securities, and based on the assumptions made by and information currently available to the Group's management.
2. Actual results, performance or events may differ materially from those in the table due to, among other things, (1) general economic conditions, (2) performance of financial markets, (3) the frequency and severity of insured loss events, (4) mortality and morbidity levels and trends, (5) persistency levels, (6) interest rate levels, (7) general competitive factors, (8) changes in law and regulations
3. The embedded value and value of new business results from 2017 to 2021 are based on a consistent set of major assumptions
4. KB Financial Group assumes no legal obligations to any claims on the investment result based on information provided in this table

Disclaimer

Highlights

KB Financial Group

KB Kookmin Bank

KB Securities

KB Insurance

Condensed Income Statement

Condensed Balance Sheet

Key Indicators

Direct Premiums

Loss & Expense Ratios

Monthly Initial Premiums

KB Kookmin Card

Prudential Life Insurance

Other Subsidiaries

Contacts

Direct Premiums by Policy Type (Quarterly)

(bn Won)	1Q20		2Q20		3Q20		4Q20		1Q21		2Q21		3Q21		4Q21(E)	
		(%)		(%)		(%)		(%)		(%)		(%)		(%)		(%)
General	334.6	12.2	256.3	9.4	232.8	8.5	250.0	9.0	372.3	12.9	279.8	9.7	260.7	9.1	254.4	8.8
Long-term	1,796.1	65.6	1,813.9	66.5	1,827.7	67.0	1,853.1	66.7	1,876.8	64.9	1,918.6	66.4	1,931.8	67.6	1,960.9	67.9
Long-term	1,723.6	63.0	1,744.7	63.9	1,761.4	64.5	1,787.8	64.3	1,817.8	62.9	1,863.6	64.5	1,880.0	65.8	1,911.3	66.2
Pension	72.5	2.7	69.1	2.5	66.3	2.4	65.3	2.3	59.0	2.0	55.0	1.9	51.9	1.8	49.6	1.7
Auto	606.8	22.2	659.4	24.2	668.3	24.5	676.2	24.3	641.9	22.2	690.4	23.9	664.3	23.3	671.8	23.3
Total	2,737.5	100.0	2,729.5	100.0	2,728.8	100.0	2,779.3	100.0	2,891.0	100.0	2,888.8	100.0	2,856.8	100.0	2,887.1	100.0

Direct Premiums by Policy Type (Cumulative)

(bn Won)	1Q20		2Q20		3Q20		4Q20		1Q21		2Q21		3Q21		4Q21(E)	
		(%)		(%)		(%)		(%)		(%)		(%)		(%)		(%)
General	334.6	12.2	590.9	10.8	823.7	10.1	1,073.8	9.8	372.3	12.9	652.2	11.3	912.9	10.6	1,167.3	10.1
Long-term	1,796.1	65.6	3,610.0	66.0	5,437.6	66.3	7,290.7	66.4	1,876.8	64.9	3,795.4	65.7	5,727.2	66.3	7,688.1	66.7
Long-term	1,723.6	63.0	3,468.3	63.4	5,229.6	63.8	7,017.5	63.9	1,817.8	62.9	3,681.4	63.7	5,561.4	64.4	7,472.6	64.8
Pension	72.5	2.7	141.7	2.6	208.0	2.5	273.3	2.5	59.0	2.0	114.0	2.0	165.9	1.9	215.5	1.9
Auto	606.8	22.2	1,266.1	23.2	1,934.4	23.6	2,610.6	23.8	641.9	22.2	1,332.2	23.0	1,996.6	23.1	2,668.4	23.2
Total	2,737.5	100.0	5,467.0	100.0	8,195.8	100.0	10,975.1	100.0	2,891.0	100.0	5,779.8	100.0	8,636.7	100.0	11,523.8	100.0

Disclaimer

Highlights

KB Financial Group

KB Kookmin Bank

KB Securities

KB Insurance

Condensed Income Statement

Condensed Balance Sheet

Key Indicators

Direct Premiums

Loss & Expense Ratios

Monthly Initial Premiums

KB Kookmin Card

Prudential Life Insurance

Other Subsidiaries

Contacts

Loss & Expense Ratios (Quarterly)

(bn Won, %)	1Q21					2Q21					3Q21					4Q21(E)				
	Premium	Loss	Loss Ratio	Net Expense	Expense Ratio	Premium	Loss	Loss Ratio	Net Expense	Expense Ratio	Premium	Loss	Loss Ratio	Net Expense	Expense Ratio	Premium	Loss	Loss Ratio	Net Expense	Expense Ratio
General	131.3	98.1	74.7	28.2	21.5	142.2	113.1	79.5	34.6	24.3	158.9	140.1	88.2	31.7	20.0	159.4	154.3	96.8	34.6	21.7
Long-term	1,765.4	1,509.0	85.5	391.6	22.2	1,800.6	1,540.3	85.5	395.5	22.0	1,811.7	1,553.9	85.8	373.4	20.6	1,847.6	1,618.3	87.6	353.7	19.1
Long-term	1,706.5	1,425.5	83.5	389.4	22.8	1,745.7	1,460.1	83.6	393.3	22.5	1,759.9	1,474.0	83.8	334.7	19.0	1,798.0	1,551.0	86.3	351.9	19.6
Pension	58.9	83.6	141.9	2.2	3.8	54.9	80.1	145.9	2.2	3.9	51.8	77.0	148.7	1.5	2.8	49.6	67.3	135.8	1.8	3.6
Auto	601.4	481.4	80.0	105.5	17.5	617.1	478.5	77.5	109.8	17.8	631.3	498.0	78.9	104.2	16.5	631.1	563.0	89.2	105.8	16.8
Total	2,498.2	2,088.5	83.6	527.2	21.1	2,559.9	2,131.8	83.3	542.0	21.2	2,601.9	2,192.0	84.2	511.1	19.6	2,638.1	2,335.6	88.5	496.0	18.8

Loss & Expense Ratios (Cumulative)

(bn Won, %)	1Q21					2Q21					3Q21					4Q21(E)				
	Premium	Loss	Loss Ratio	Net Expense	Expense Ratio	Premium	Loss	Loss Ratio	Net Expense	Expense Ratio	Premium	Loss	Loss Ratio	Net Expense	Expense Ratio	Premium	Loss	Loss Ratio	Net Expense	Expense Ratio
General	131.3	98.1	74.7	28.2	21.5	273.5	211.2	77.2	62.8	23.0	432.4	351.3	81.3	94.5	21.9	591.8	505.6	85.4	129.1	21.8
Long-term	1,765.4	1,509.0	85.5	391.6	22.3	3,566.0	3,049.3	85.5	787.1	22.2	5,377.8	4,603.2	85.6	1,060.5	21.6	7,225.4	6,221.5	86.1	1,514.2	21.0
Long-term	1,706.5	1,425.5	83.5	389.4	22.8	3,452.2	2,885.6	83.6	782.7	22.1	5,212.1	4,359.6	83.6	1,117.4	21.4	7,010.1	5,913.4	84.4	1,506.0	21.5
Pension	58.9	83.6	141.9	2.2	3.8	113.8	163.7	143.8	4.4	3.9	165.6	240.7	145.3	5.9	3.6	215.2	308.1	143.1	8.2	3.8
Auto	601.4	481.4	80.0	105.5	17.5	1,218.5	959.9	78.8	215.3	17.7	1,849.8	1,457.9	78.8	319.6	17.3	2,481.0	2,020.8	81.5	425.4	17.1
Total	2,498.2	2,088.5	83.6	527.2	21.1	5,058.1	4,220.4	83.4	1,069.2	21.1	7,660.0	6,412.4	83.7	1,580.3	20.6	10,298.1	8,748.0	84.9	2,076.4	20.2

Disclaimer

Highlights

KB Financial Group

KB Kookmin Bank

KB Securities

KB Insurance

Condensed Income Statement

Condensed Balance Sheet

Key Indicators

Direct Premiums

Loss & Expense Ratios

Monthly Initial Premiums

KB Kookmin Card

Prudential Life Insurance

Other Subsidiaries

Contacts

Monthly Initial Premiums

million won	2021.01	2021.02	2021.03	2021.04	2021.05	2021.06	2021.07	2021.08	2021.09	2021.10	2021.11	2021.12	Average	FY2021
Protection	7,559	8,697	11,631	8,976	8,515	11,821	9,162	8,638	8,565	8,319	8,615		9,136	100,498
Accident	1,158	1,630	2,528	1,235	1,279	1,766	1,561	1,553	1,508	1,209	1,269		1,518	16,697
Drivers	920	801	1,532	1,771	1,028	1,128	1,024	925	1,270	1,404	945		1,159	12,748
Property	1,148	1,087	1,283	1,297	1,234	1,690	1,568	1,247	1,293	1,385	1,522		1,341	14,755
Disease	4,333	5,179	6,288	4,672	4,974	7,237	5,009	4,912	4,494	4,321	4,879		5,118	56,298
Bundled	0.1	0.0	-0.1	-0.2	0.0	0.0	0.0	0.1	0.1	0.2	0.0		0.0	0.4
Savings	26	23	26	29	51	26	25	12	11	24	19		25	273
Annuities	91	91	88	61	54	86	58	41	34	36	39		62	681
Total	7,677	8,812	11,745	9,066	8,621	11,932	9,246	8,691	8,611	8,379	8,673		9,223	101,452

million won	2020.01	2020.02	2020.03	2020.04	2020.05	2020.06	2020.07	2020.08	2020.09	2020.10	2020.11	2020.12	Average	FY2020
Protection	6,449	7,099	8,959	7,412	7,754	8,633	8,890	7,960	8,719	8,653	8,878	9,761	8,264	99,167
Accident	791	873	1,465	898	896	904	1,296	1,120	1,271	1,374	1,513	1,844	1,187	14,244
Drivers	848	966	1,047	2,617	1,783	1,738	1,497	1,123	1,139	970	1,034	1,101	1,322	15,865
Property	1,172	1,170	1,684	989	1,183	1,323	1,296	1,198	1,359	1,270	1,313	1,416	1,281	15,372
Disease	3,639	4,089	4,762	2,908	3,893	4,667	4,802	4,519	4,949	5,039	5,018	5,400	4,474	53,686
Bundled	0.0	0.0	0.1	0.0	0.0	0.0	0.1	0.0	0.2	0.1	0.0	0.0	0.0	0.5
Savings	44	36	48	34	38	42	39	29	30	41	31	24	36	438
Annuities	110	96	74	53	62	68	60	44	44	35	41	58	62	746
Total	6,604	7,231	9,081	7,500	7,854	8,743	8,989	8,032	8,793	8,730	8,951	9,844	8,363	100,352

Disclaimer

Highlights

KB Financial Group

KB Kookmin Bank

KB Securities

KB Insurance

KB Kookmin Card

Condensed Income Statement

Condensed Balance Sheet

Customers / Volume / Receivables

Asset Quality

Delinquency

Prudential Life Insurance

Other Subsidiaries

Contacts

(bn Won)	1Q20	2Q20	3Q20	4Q20	1Q21	2Q21	3Q21	4Q21(E)
Net interest income	318.2	306.2	314.5	326.8	339.6	342.7	350.3	358.2
Net fee and commission income	82.9	96.6	93.9	127.1	149.6	123.3	125.2	147.9
Net other operating income(expenses)	-62.3	-61.6	-93.4	-94.1	-80.8	-73.9	-70.0	-96.7
Gross operating income	338.8	341.2	315.0	359.8	408.4	392.1	405.5	409.4
General & administrative expenses	111.7	117.0	120.6	165.5	142.4	131.8	134.3	169.2
Operating profit before provision for credit losses	227.1	224.2	194.4	194.3	266.0	260.3	271.2	240.2
Provision for credit losses	116.1	111.9	68.9	99.6	79.0	108.7	97.1	180.5
Net operating income	111.0	112.3	125.5	94.7	187.0	151.6	174.1	59.7
Net non-operating income	-0.8	-1.0	-1.5	-2.2	-1.1	-1.1	-2.5	-1.9
Share of profit(loss) of associates	0.5	0.2	0.2	0.2	0.4	0.2	0.2	0.0
Net other non-operating income(expenses)	-1.3	-1.2	-1.7	-2.4	-1.5	-1.3	-2.7	-1.9
Profit before income tax	110.2	111.3	124.0	92.5	185.9	150.5	171.6	57.8
Income tax expense	28.1	29.6	32.9	23.4	43.5	39.9	49.2	12.0
Profit for the period	82.1	81.7	91.1	69.1	142.4	110.6	122.4	45.8
Profit attributable to shareholders of the parent company	82.1	81.7	91.4	69.5	141.5	111.3	121.3	44.8

[Return to Home](#)
[KB Kookmin Card](#)
Disclaimer
Highlights
KB Financial Group
KB Kookmin Bank
KB Securities
KB Insurance
KB Kookmin Card
[Condensed Income Statement](#)
[Condensed Balance Sheet](#)
[Customers / Volume / Receivables](#)
[Asset Quality](#)
[Delinquency](#)
Prudential Life Insurance
Other Subsidiaries
Contacts

(bn Won)	Mar. 20	Jun. 20	Sep. 20	Dec. 20	Mar. 21	Jun. 21	Sep. 21	Dec. 21(E)
Total Assets	22,462.9	23,858.8	24,292.3	24,071.6	25,106.7	25,841.3	27,021.9	27,349.6
Cash and due from financial institutions	233.7	411.2	216.1	273.1	290.5	284.9	270.3	297.4
Financial assets at fair value through profit or loss	711.2	546.9	960.1	316.2	443.2	855.0	717.3	691.7
Derivative financial assets	38.9	19.6	10.9	1.2	5.7	10.0	33.8	35.9
Financial investments	76.8	54.1	54.0	64.0	61.9	61.6	61.7	63.2
Loans	20,579.5	20,802.5	21,998.9	22,511.5	23,248.8	23,772.9	23,856.0	25,117.9
(Allowances for loan losses)	-799.9	-790.5	-765.4	-768.3	-768.2	-789.7	-801.1	-876.7
Investments in associates	5.2	5.3	5.3	5.1	5.6	5.7	7.0	6.3
Tangible assets	143.7	145.3	162.8	163.9	158.0	150.2	159.4	169.3
Goodwill & Intangible assets	176.4	166.1	225.5	238.9	234.2	220.9	210.9	220.2
Current income tax assets	0.0	0.0	0.0	0.0	0.0	0.1	0.1	0.0
Deferred income tax assets	117.1	133.3	143.0	147.5	141.1	145.5	140.2	151.3
Other assets	380.4	1,574.5	515.7	350.2	517.7	334.5	1,565.2	596.4
Total Liabilities	18,432.8	19,760.5	20,090.4	19,790.0	20,848.0	21,465.2	22,512.7	22,793.9
Financial liabilities at fair value through profit or loss	0.0	0.0	0.0	0.0	0.0	0.0	0.0	0.0
Deposits	0.0	0.0	0.0	0.0	0.0	0.0	0.0	0.0
Debts	1,124.1	1,102.5	846.3	988.8	1,954.6	2,513.4	2,719.9	2,789.6
Debentures	14,674.5	15,549.2	15,764.5	15,874.2	15,924.8	15,943.2	16,166.5	16,724.2
Derivative financial liabilities	30.0	33.9	52.3	109.4	59.6	53.7	6.6	5.4
Net defined benefit liabilities	1.9	5.6	16.0	6.2	11.4	14.8	19.6	7.7
Provisions	147.6	163.5	168.6	182.1	175.3	182.6	184.0	210.6
Accrued expenses payables	208.5	216.1	221.6	187.9	219.9	232.5	249.9	216.0
Other liabilities	2,246.2	2,689.7	3,021.1	2,441.4	2,502.4	2,525.0	3,166.2	2,840.4
Total Equity	4,030.1	4,098.3	4,201.9	4,281.7	4,258.7	4,376.1	4,509.2	4,555.6
Share capital	460.0	460.0	460.0	460.0	460.0	460.0	460.0	460.0
Capital surplus	1,977.0	1,977.0	1,977.0	1,977.0	1,977.0	1,977.0	1,977.0	1,977.0
Accumulated other comprehensive income	1.9	-11.6	-8.2	2.5	8.8	16.0	26.2	26.4
Retained earnings	1,588.9	1,670.6	1,762.0	1,831.5	1,777.7	1,889.0	2,010.3	2,055.1
Non-controlling interest	2.3	2.3	11.1	10.7	35.2	34.1	35.7	37.1

[Return to Home](#)
[KB Kookmin Card](#)
[Disclaimer](#)
[Highlights](#)
[KB Financial Group](#)
[KB Kookmin Bank](#)
[KB Securities](#)
[KB Insurance](#)
[KB Kookmin Card](#)
[Condensed Income Statement](#)
[Condensed Balance Sheet](#)
[Customers / Volume / Receivables](#)
[Asset Quality](#)
[Delinquency](#)
[Prudential Life Insurance](#)
[Other Subsidiaries](#)
[Contacts](#)
Customers

(in thousands)	Mar. 20	Jun. 20	Sep. 20	Dec. 20	Mar. 21	Jun. 21	Sep. 21	Dec. 21(E)
Cardholders*	19,361.6	19,423.6	19,586.9	19,506.0	19,383.1	19,303.0	19,283.2	19,377.7
Credit card	10,344.8	10,436.9	10,556.3	10,586.0	10,625.2	10,692.8	10,759.2	10,879.4
Check card	14,152.6	14,166.7	14,291.4	14,151.9	13,975.2	13,798.1	13,715.1	13,763.5
Active Cardholders**	8,948	9,020	9,104	9,136	9,193	9,290	9,384	9,462
Merchants	2,661.9	2,699.7	2,723.6	2,743.3	2,775.7	2,803.4	2,831.8	2,856.5

* Excluding overlapped cardholders between credit card and check card

** Using card at least once every 6 months

Transaction Volume

(bn Won)	1Q20	2Q20	3Q20	4Q20	1Q21	2Q21	3Q21	4Q21(E)
Credit Sales	23,638.2	25,137.5	25,639.5	26,233.8	25,886.0	28,140.1	27,921.0	29,782.9
Lump-sum	18,928.9	20,571.2	20,736.5	21,091.5	21,032.5	23,207.3	22,780.0	24,293.4
Installment	4,709.3	4,566.3	4,903.0	5,142.2	4,853.5	4,932.9	5,141.0	5,489.5
Cash advance	2,268.7	2,087.1	2,102.9	2,132.1	2,113.6	2,216.4	2,231.7	2,329.5
Total	25,906.9	27,224.6	27,742.4	28,365.9	27,999.6	30,356.5	30,152.7	32,112.4

Credit Card Receivables

(bn Won)	Mar. 20	Jun. 20	Sep. 20	Dec. 20	Mar. 21	Jun. 21	Sep. 21	Dec. 21(E)
Credit sales	11,053.4	11,253.9	11,917.5	12,029.8	12,363.0	12,609.9	12,571.5	13,740.3
Cash advance	1,161.3	1,070.4	1,058.5	1,054.0	1,039.9	1,090.7	1,108.8	1,153.0
Card loans	5,529.3	5,345.2	5,411.8	5,622.6	5,791.0	5,873.5	5,883.2	5,821.4
Others	3,477.6	3,768.1	4,002.9	4,151.0	4,196.0	4,315.3	4,343.7	4,462.4
Total	21,221.6	21,437.6	22,390.7	22,857.4	23,389.9	23,889.4	23,907.2	25,177.1

Disclaimer

Highlights

KB Financial Group

KB Kookmin Bank

KB Securities

KB Insurance

KB Kookmin Card

- Condensed Income Statement
- Condensed Balance Sheet
- Customers / Volume / Receivables
- Asset Quality**
- Delinquency

Prudential Life Insurance

Other Subsidiaries

Contacts

(bn Won)	Mar. 20	Jun. 20	Sep. 20	Dec. 20	Mar. 21	Jun. 21	Sep. 21	Dec. 21(E)
Total Outstanding Credits	21,235.6	21,446.6	22,394.7	22,861.3	23,393.7	23,893.0	23,910.6	25,180.7
Normal	20,076.6	20,370.2	21,307.3	21,778.4	22,313.2	22,776.2	22,740.2	24,018.4
Precautionary	838.2	759.6	824.9	846.8	836.1	878.3	930.3	921.5
Substandard	3.1	4.1	4.4	3.7	3.8	3.9	3.9	4.0
Doubtful	236.8	206.0	182.5	162.1	174.1	169.4	170.7	174.0
Estimated Loss	80.9	106.7	75.6	70.3	66.5	65.3	65.4	62.7
NPL (A)	320.8	316.8	262.6	236.1	244.4	238.6	240.0	240.7
NPL Ratio	1.51%	1.48%	1.17%	1.03%	1.04%	1.00%	1.00%	0.96%
Allowances* (B)	800.7	791.4	756.1	755.6	738.4	748.6	761.1	838.1
Reserves for credit losses (C)	301.3	275.3	302.5	323.6	342.4	401.6	416.2	403.8
NPL Coverage Ratio(New)** (B/A)	249.6%	249.8%	288.0%	320.0%	302.2%	313.8%	317.1%	348.2%
NPL Coverage Ratio(Old)*** [(B+C)/A]	343.6%	336.7%	403.2%	457.1%	442.3%	482.1%	490.4%	515.9%

* Allowances for loan losses and acceptances & guarantees

** Excluding reserves for credit losses

*** Including reserves for credit losses

Write-offs / NPL Sales

(bn Won)	1Q20	2Q20	3Q20	4Q20	1Q21	2Q21	3Q21	4Q21(E)
Write-offs	126.4	148.1	122.6	121.9	116.1	112.7	104.8	109.2
NPL Sales	0.0	0.0	0.0	0.0	0.0	0.0	0.0	0.0
Total	126.4	148.1	122.6	121.9	116.1	112.7	104.8	109.2

Recoveries from Written-offs

(bn Won)	1Q20	2Q20	3Q20	4Q20	1Q21	2Q21	3Q21	4Q21(E)
Recovery from Written-offs	34.2	34.3	33.7	35.1	34.0	35.6	33.3	33.6

Disclaimer

Highlights

KB Financial Group

KB Kookmin Bank

KB Securities

KB Insurance

KB Kookmin Card

Condensed Income Statement

Condensed Balance Sheet

Customers / Volume / Receivables

Asset Quality

Delinquency

Prudential Life Insurance

Other Subsidiaries

Contacts

Delinquency

(bn Won)	Mar. 20	Jun. 20	Sep. 20	Dec. 20	Mar. 21	Jun. 21	Sep. 21	Dec. 21(E)
Total loans	21,231.7	21,442.6	22,390.7	22,857.4	23,389.9	23,889.4	23,907.2	25,177.1
Delinquent loans (over one month overdue)	263.1	231.3	221.5	215.2	202.0	195.3	207.6	205.7
Delinquency ratio	1.24%	1.08%	0.99%	0.94%	0.86%	0.82%	0.87%	0.82%

Rescheduled Loan

(bn Won)	Mar. 20	Jun. 20	Sep. 20	Dec. 20	Mar. 21	Jun. 21	Sep. 21	Dec. 21(E)
Receivables	120.4	121.9	120.1	119.1	116.7	114.0	113.0	111.8
Delinquent loan (over one month overdue)	8.3	8.0	8.3	8.3	6.6	6.1	7.0	6.7
Delinquency ratio	6.88%	6.54%	6.90%	6.95%	5.69%	5.37%	6.17%	6.01%

Disclaimer
Highlights
KB Financial Group
KB Kookmin Bank
KB Securities
KB Insurance
KB Kookmin Card
Prudential Life Insurance
Condensed Income Statement
[Condensed Balance Sheet](#)
[Key Indicators](#)
[Premium Income](#)
[Loss & Expense Ratios](#)
[APE](#)
Other Subsidiaries
Contacts

(bn Won)	1Q20	2Q20	3Q20	4Q20	1Q21	2Q21	3Q21	4Q21(E)
Net interest income			27.2	84.9	84.3	86.0	88.3	89.9
Net fee and commission income			-0.8	-2.1	-1.8	-2.8	-1.7	-2.4
Net other operating income(expenses)			21.4	44.2	96.2	56.2	28.1	71.7
Gross operating income			47.8	127.0	178.7	139.4	114.7	159.2
General & administrative expenses			31.9	49.9	29.6	30.3	29.9	40.0
Operating profit before provision for credit losses			15.9	77.1	149.1	109.1	84.8	119.2
Provision for credit losses			0.3	0.2	0.0	0.1	0.0	0.3
Net operating profit			15.6	76.9	149.1	109.0	84.8	118.9
Net non-operating income			0.0	-0.1	0.1	0.6	1.1	-2.8
Share of profit(loss) of associates			0.0	0.0	0.0	0.0	0.0	0.0
Net other non-operating income(expenses)			0.0	-0.1	0.1	0.6	1.1	-2.8
Profit before income tax			15.6	76.8	149.2	109.6	85.9	116.1
Income tax expense			4.5	32.2	37.1	29.3	22.7	35.5
Profit for the period			11.1	44.6	112.1	80.3	63.2	80.6
Profit attributable to shareholders of the parent company			11.1	44.6	112.1	80.3	63.2	80.6

* Financial results have been fully consolidated in the Group's financial statements since 3Q20(one month period of September).

Disclaimer
Highlights
KB Financial Group
KB Kookmin Bank
KB Securities
KB Insurance
KB Kookmin Card
Prudential Life Insurance
[Condensed Income Statement](#)
[Condensed Balance Sheet](#)
[Key Indicators](#)
[Premium Income](#)
[Loss & Expense Ratios](#)
[APE](#)
Other Subsidiaries
Contacts

(bn Won)	Mar. 20	Jun. 20	Sep. 20	Dec. 20	Mar. 21	Jun. 21	Sep. 21	Dec. 21(E)
Total Assets			24,408.3	25,121.7	24,969.0	25,508.0	25,615.2	26,287.1
Cash and due from financial institutions			595.5	367.4	286.4	176.9	118.6	423.5
Financial assets at fair value through profit or loss			503.2	595.8	550.4	601.8	735.1	892.2
Derivative financial assets			5.6	46.1	20.2	12.0	0.0	1.1
Financial investments			17,466.5	17,711.3	17,424.0	17,792.1	17,750.1	17,640.7
Loans			756.2	760.9	768.2	808.0	852.8	902.1
(Allowances for loan losses)			0.0	0.0	0.0	0.0	0.0	0.0
Investments in associates			0.0	0.0	0.0	0.0	0.0	0.0
Tangible assets			328.0	335.5	335.9	336.4	333.6	330.5
Goodwill & Intangible assets			10.4	12.9	14.6	14.9	14.7	17.1
Current income tax assets			49.0	48.8	65.1	10.2	28.1	28.9
Deferred income tax assets			0.0	0.0	0.0	0.0	0.0	0.0
Other assets			4,693.9	5,243.0	5,504.2	5,755.7	5,782.2	6,051.0
Total Liabilities			21,872.3	22,681.7	22,762.9	23,213.8	23,392.2	23,992.6
Financial liabilities at fair value through profit or loss			0.0	0.0	0.0	0.0	0.0	0.0
Deposits			0.0	0.0	0.0	0.0	0.0	0.0
Debts			0.0	0.0	0.0	0.0	0.0	0.0
Debentures			0.0	0.0	0.0	0.0	0.0	0.0
Derivative financial liabilities			0.3	0.3	3.8	6.0	32.7	23.8
Net defined benefit liabilities			23.6	5.5	7.3	9.0	10.6	0.0
Provisions			5.5	5.8	5.9	5.8	5.6	6.0
Accrued expenses payables			64.9	69.9	72.2	69.8	68.3	67.9
Other liabilities			21,778.0	22,600.2	22,673.7	23,123.2	23,275.0	23,894.9
Total Equity			2,535.9	2,439.9	2,206.2	2,294.2	2,223.0	2,294.5
Share capital			150.0	150.0	150.0	150.0	150.0	150.0
Capital surplus			0.0	0.0	0.0	0.0	0.0	0.0
Accumulated other comprehensive income			53.2	-87.4	-333.2	-325.5	-359.9	-369.0
Retained earnings			3,148.1	3,192.7	3,204.8	3,285.1	3,248.3	3,328.9
Fair value adjustment			-815.4	-815.4	-815.4	-815.4	-815.4	-815.4

* Financial results have been fully consolidated in the Group's financial statements since 3Q20(one month period of September).

Disclaimer
Highlights
KB Financial Group
KB Kookmin Bank
KB Securities
KB Insurance
KB Kookmin Card
Prudential Life Insurance
[Condensed Income Statement](#)
[Condensed Balance Sheet](#)
[Key Indicators](#)
[Premium Income](#)
[Loss & Expense Ratios](#)
[APE](#)
Other Subsidiaries
Contacts
Summarized Statement of Financial Position

(bn Won, %)	Mar. 20	Jun. 20	Sep. 20	Dec. 20	Mar. 21	Jun. 21	Sep. 21	Dec. 21(E)
Invested assets	16,569.4	16,942.3	17,401.9	17,553.7	17,184.7	17,572.6	17,689.4	18,130.7
Net investment yield (cumulative)	3.56	3.47	4.64	4.49	4.93	4.86	3.65	3.41
Separate Account Assets	4,009.8	4,348.6	4,495.0	4,988.8	5,230.3	5,425.5	5,462.6	5,679.4
Total Assets	21,146.2	21,881.3	22,441.8	23,166.3	23,024.7	23,574.8	23,706.0	24,397.8
Policy reserves	13,567.9	13,772.0	13,990.9	14,248.2	14,455.0	14,687.8	14,948.0	15,129.0
Separate Account Liabilities	4,045.1	4,374.2	4,540.0	5,234.4	5,257.6	5,521.4	5,488.1	5,953.7
Total Liabilities	18,331.9	18,905.2	19,297.1	20,191.6	20,332.4	20,838.8	21,082.5	21,739.8
Total Equities	2,814.3	2,976.0	3,144.7	2,974.7	2,692.2	2,736.0	2,623.5	2,658.0
Total Liabilities & Equities	21,146.2	21,881.3	22,441.8	23,166.3	23,024.7	23,574.8	23,706.0	24,397.8

Summarized Statement of Comprehensive Income (Cumulative)

(bn Won)	1Q20	2Q20	3Q20	4Q20	1Q21	2Q21	3Q21	4Q21(E)
Insurance income & expense	101.5	206.4	311.5	402.7	111.8	234.1	361.9	480.8
Investment income & expense	119.9	265.6	607.3	744.6	186.8	340.1	492.4	598.0
Changes in insurance contract Liabilities	235.1	436.5	652.5	906.9	203.3	433.5	691.6	867.1
Operating income & expense	-13.7	35.5	266.4	240.4	95.3	140.6	162.7	211.6
Non-Operating income & expense	18.9	43.6	66.1	86.8	24.6	49.9	75.3	95.9
Income tax expense	0.2	18.8	-90.2	99.4	29.1	47.7	59.8	82.4
Net Income	5.0	60.4	242.3	227.8	90.8	142.8	178.2	225.0

Capital Adequacy

(bn Won)	Mar. 20	Jun. 20	Sep. 20	Dec. 20	Mar. 21	Jun. 21	Sep. 21	Dec. 21(E)
RBC Ratio	434.5%	456.4%	486.4%	428.9%	395.5%	368.6%	355.7%	342.5%
Available capital	2,811.8	2,972.8	3,143.2	2,868.9	2,676.8	2,622.4	2,613.5	2,545.9
Required capital	647.1	651.3	646.2	668.8	676.9	711.4	734.7	743.4

Disclaimer

Highlights

KB Financial Group

KB Kookmin Bank

KB Securities

KB Insurance

KB Kookmin Card

Prudential Life Insurance

[Condensed Income Statement](#)

[Condensed Balance Sheet](#)

[Key Indicators](#)

[Premium Income](#)

[Loss & Expense Ratios](#)

[APE](#)

Other Subsidiaries

Contacts

Premium Income by Policy Type (Quarterly)

(bn Won)	1Q20		2Q20		3Q20		4Q20		1Q21		2Q21		3Q21		4Q21(E)	
		(%)		(%)		(%)		(%)		(%)		(%)		(%)		(%)
Individual policy	556.5	100.0	562.4	100.0	555.7	100.0	574.5	53.9	561.7	97.3	510.9	77.8	504.3	93.9	503.6	45.6
Protection	345.6	62.1	343.4	61.1	341.5	61.4	340.7	32.0	339.4	58.8	333.1	50.7	332.0	61.8	331.3	30.0
Whole-Life	236.2	42.4	234.9	41.8	233.7	42.0	232.9	21.9	230.4	39.9	226.1	34.4	223.7	41.7	221.4	20.0
Variable	92.8	16.7	92.0	16.4	91.3	16.4	91.5	8.6	92.2	16.0	89.0	13.5	88.0	16.4	87.5	7.9
Savings	210.8	37.9	219.0	38.9	214.2	38.6	233.7	21.9	222.3	38.5	177.9	27.1	172.4	32.1	172.2	15.6
Annuities	38.6	6.9	37.4	6.7	37.1	6.7	36.4	3.4	37.5	6.5	41.3	6.3	47.2	8.8	51.5	4.7
Variable	171.6	30.8	181.0	32.2	176.6	31.8	196.8	18.5	184.3	31.9	136.2	20.7	124.7	23.2	120.3	10.9
Pension	-	-	-	-	-	-	491.0	46.1	15.5	2.7	146.2	22.2	32.7	6.1	601.4	54.4
Total	556.5	100.0	562.4	100.0	555.7	100.0	1,065.5	100.0	577.2	100.0	657.2	100.0	537.0	100.0	1,105.0	100.0

Premium Income by Policy Type (Cumulative)

(bn Won)	1Q20		2Q20		3Q20		4Q20		1Q21		2Q21		3Q21		4Q21(E)	
		(%)		(%)		(%)		(%)		(%)		(%)		(%)		(%)
Individual policy	556.5	100.0	1,118.9	100.0	1,674.6	100.0	2,249.1	82.1	561.7	97.3	1,072.6	86.9	1,576.9	89.0	2,080.5	72.3
Protection	345.6	62.1	689.1	61.6	1,030.6	61.5	1,371.3	50.0	339.4	58.8	672.4	54.5	1,004.4	56.7	1,335.7	46.4
Whole-Life	236.2	42.4	471.1	42.1	704.8	42.1	937.7	34.2	230.4	39.9	456.5	37.0	680.2	38.4	901.6	31.3
Variable	92.8	16.7	184.9	16.5	276.2	16.5	367.7	13.4	92.2	16.0	181.1	14.7	269.2	15.2	356.6	12.4
Savings	210.8	37.9	429.8	38.4	644.1	38.5	877.8	32.0	222.3	38.5	400.2	32.4	572.6	32.3	744.8	25.9
Annuities	38.6	6.9	76.1	6.8	113.2	6.8	149.6	5.5	37.5	6.5	78.8	6.4	126.0	7.1	177.5	6.2
Variable	171.6	30.8	352.6	31.5	529.2	31.6	726.0	26.5	184.3	31.9	320.5	26.0	445.2	25.1	565.5	19.7
Pension	-	-	-	-	-	-	491.0	17.9	15.5	2.7	161.8	13.1	194.4	11.0	795.8	27.7
Total	556.5	100.0	1,118.9	100.0	1,674.6	100.0	2,740.1	100.0	577.2	100.0	1,234.4	100.0	1,771.3	100.0	2,876.3	100.0

Disclaimer
Highlights
KB Financial Group
KB Kookmin Bank
KB Securities
KB Insurance
KB Kookmin Card
Prudential Life Insurance
[Condensed Income Statement](#)
[Condensed Balance Sheet](#)
[Key Indicators](#)
[Premium Income](#)
[Loss & Expense Ratios](#)
[APE](#)
Other Subsidiaries
Contacts
Loss & Expense Ratios

(bn Won, %)	4Q19	1Q20	2Q20	3Q20	4Q20	1Q21	2Q21	3Q21	4Q21(E)
Quarterly Loss Ratio	54.0	58.3	40.5	55.4	43.9	52.1	50.3	55.7	57.3
Risk Premium	89.5	90.6	91.4	92.0	92.7	93.5	94.3	95.2	96.3
Loss	48.3	52.8	37.0	50.9	40.7	48.7	47.4	53.0	55.2
Cumulative Loss Ratio	52.3	58.3	49.4	51.4	49.5	52.1	51.2	52.7	53.9
Risk Premium	352.5	90.6	181.9	273.9	366.6	93.5	187.9	283.0	379.3
Loss	184.5	52.8	89.8	140.7	181.4	48.7	96.1	149.1	204.3
Expense Ratio	9.1	10.5	11.8	12.6	12.7	8.6	9.2	15.5	19.2

Policy Persistency

(bn Won, %)	4Q19	1Q20	2Q20	3Q20	4Q20	1Q21	2Q21	3Q21	4Q21(E)
Quarterly									
13th Month	86.8	87.3	88.4	85.9	85.7	84.7	85.4	81.1	85.2
25th Month	69.0	72.8	72.6	72.5	74.2	71.6	74.5	71.1	72.3
Cumulative									
13th Month	86.9	87.3	87.9	87.3	86.9	84.7	85.0	83.7	84.0
25th Month	69.2	72.8	72.7	72.6	73.0	71.6	73.1	72.5	72.4

Retention

(bn Won, %)	4Q19	1Q20	2Q20	3Q20	4Q20	1Q21	2Q21	3Q21	4Q21(E)
Quarterly									
LP Retention 13th	40.6	51.9	53.1	49.4	45.3	45.3	51.5	43.4	41.6
LP Retention 25th	30.8	29.6	25.4	27.4	22.9	22.9	20.6	21.8	20.3
Cumulative									
LP Retention 13th	43.8	51.9	52.8	51.7	45.3	45.3	49.6	47.7	46.3
LP Retention 25th	31.3	29.6	26.6	27.0	22.9	22.9	21.2	21.4	21.0

Disclaimer

Highlights

KB Financial Group

KB Kookmin Bank

KB Securities

KB Insurance

KB Kookmin Card

Prudential Life Insurance

[Condensed Income Statement](#)

[Condensed Balance Sheet](#)

[Key Indicators](#)

[Premium Income](#)

[Loss & Expense Ratios](#)

APE

Other Subsidiaries

Contacts

APE (Annualized Premium Equivalent)

million won	2021.01	2021.02	2021.03	2021.04	2021.05	2021.06	2021.07	2021.08	2021.09	2021.10	2021.11	2021.12	Average	FY2021
Protection	7,575	7,098	10,524	7,679	6,685	11,950	8,743	8,254	8,586	8,218	9,539	14,520	9,114	109,372
Whole-Life	4,189	4,127	6,030	4,127	4,010	5,667	3,864	4,220	3,925	3,842	4,606	4,612	4,435	53,222
Variable	1,395	1,204	2,037	1,429	785	1,942	868	1,280	1,382	858	1,090	1,244	1,293	15,514
etc.	1,991	1,766	2,458	2,123	1,890	4,341	4,010	2,755	3,279	3,518	3,843	8,663	3,386	40,638
Savings	13,489	13,581	10,838	13,919	13,904	15,410	13,910	11,217	9,969	8,504	9,342	24,391	13,206	158,476
Annuities	3,827	5,599	4,511	7,168	7,032	9,001	8,990	7,163	5,513	5,084	6,258	20,605	7,563	90,753
Variable	9,662	7,982	6,326	6,751	6,871	6,410	4,920	4,054	4,455	3,419	3,085	3,786	5,644	67,722
Total	21,064	20,679	21,362	21,598	20,589	27,361	22,653	19,471	18,555	16,722	18,882	38,911	22,321	267,848

million won	2020.01	2020.02	2020.03	2020.04	2020.05	2020.06	2020.07	2020.08	2020.09	2020.10	2020.11	2020.12	Average	FY2020
Protection	10,718	11,685	10,773	7,311	8,874	14,721	8,456	7,570	7,526	10,063	7,448	8,685	9,486	113,829
Whole-Life	7,899	7,933	7,180	5,488	6,275	10,610	6,581	5,426	5,368	8,087	4,931	5,778	6,796	81,555
Variable	1,802	3,037	2,954	1,375	1,983	3,120	1,313	1,520	1,802	1,572	1,892	2,405	2,065	24,776
etc.	1,017	715.4	638.4	448.3	615.7	991.4	561.4	624.0	356.4	404.6	625.1	501.4	624.9	7498.9
Savings	10,955	8,140	10,577	8,303	4,166	8,760	10,255	8,205	8,966	12,389	13,418	16,561	10,058	120,695
Annuities	-	-	-	-	-	-	-	-	-	-	-	-	-	-
Variable	10,955	8,140	10,577	8,303	4,166	8,760	10,255	8,205	8,966	12,389	13,418	16,561	10,058	120,695
Total	21,673	19,825	21,349	15,614	13,040	23,481	18,711	15,775	16,492	22,453	20,866	25,246	19,544	234,524

million won	2019.01	2019.02	2019.03	2019.04	2019.05	2019.06	2019.07	2019.08	2019.09	2019.10	2019.11	2019.12	Average	FY2019
Protection	10,807	9,322	13,989	9,678	11,297	9,786	13,509	11,370	9,499	8,439	12,023	10,020	10,811	129,738
Whole-Life	7,715	7,324	11,553	7,204	8,629	7,390	10,758	8,920	6,241	6,529	9,325	6,998	8,216	98,586
Variable	2,294	1,513	1,770	1,747	1,937	1,802	1,998	1,751	2,758	1,187	2,031	2,109	1,908	22,898
etc.	798	485.1	666.1	727.1	731.1	594.0	752.2	698.5	500.5	721.9	666.9	912.2	687.8	8253.8
Savings	6,887	5,057	10,698	7,265	6,861	8,112	5,908	6,076	13,467	13,744	15,956	23,113	10,262	123,145
Annuities	536	440	772	331	139	165	251	491	762	148	-	-	336	4,034
Variable	6,352	4,618	9,926	6,934	6,723	7,947	5,657	5,585	12,705	13,596	15,956	23,113	9,926	119,111
Total	17,695	14,379	24,687	16,942	18,158	17,898	19,417	17,445	22,966	22,183	27,979	33,133	21,074	252,882

[Return to Home](#)
[Other Subsidiaries](#)
[Disclaimer](#)
[Highlights](#)
[KB Financial Group](#)
[KB Kookmin Bank](#)
[KB Securities](#)
[KB Insurance](#)
[KB Kookmin Card](#)
[Prudential life Insurance](#)
[Other Subsidiaries](#)
[Condensed Income Statement](#)
[Condensed Balance Sheet](#)
[Contacts](#)
KB Asset Managemnet

(bn Won)	1Q20	2Q20	3Q20	4Q20	1Q21	2Q21	3Q21	4Q21(E)
Net interest income	0.2	0.9	1.1	0.2	0.3	0.2	0.3	0.3
Net fee and commission income	29.5	30.9	32.5	40.7	38.0	46.6	41.7	46.7
Net other operating income(expenses)	-10.1	6.3	6.0	6.2	4.5	2.3	0.6	3.7
Gross operating income	19.6	38.1	39.6	47.1	42.8	49.1	42.6	49.2
General & administrative expenses	12.7	15.0	15.5	22.4	15.9	18.5	17.3	24.1
Provision for credit losses	0.0	0.0	0.0	0.1	0.1	-0.1	0.0	0.0
Net operating profit	6.9	23.1	24.1	24.6	26.8	30.7	25.3	25.1
Net non-operating profit(loss)	-0.2	0.0	-0.3	-0.3	-0.1	0.1	-0.3	-0.1
Profit before income tax	6.7	23.1	23.8	24.3	26.7	30.8	25.0	25.0
Profit for the period	4.4	17.2	17.8	17.9	19.9	22.5	18.4	19.1
Profit attributable to shareholders of the parent company	4.4	17.2	17.8	17.9	19.9	22.5	18.4	19.1

KB Capital

(bn Won)	1Q20	2Q20	3Q20	4Q20	1Q21	2Q21	3Q21	4Q21(E)
Net interest income	80.5	80.7	80.6	88.2	81.2	93.5	98.4	103.3
Net fee and commission income	112.1	126.3	141.7	157.4	169.3	175.7	185.2	192.8
Net other operating income(expenses)	-86.1	-96.0	-111.1	-133.0	-120.5	-143.9	-141.4	-162.9
Gross operating income	106.5	111.0	111.2	112.6	130.0	125.3	142.2	133.2
General & administrative expenses	25.4	28.8	28.1	43.8	29.2	33.9	32.9	48.2
Provision for credit losses	28.3	38.6	26.6	33.9	28.3	21.6	25.1	36.7
Net operating profit	52.8	43.6	56.5	34.9	72.5	69.8	84.2	48.3
Net non-operating profit(loss)	-0.1	2.5	-0.9	0.7	0.3	1.1	0.3	1.9
Profit before income tax	52.7	46.1	55.6	35.6	72.8	70.9	84.5	50.2
Profit for the period	40.0	34.7	41.7	27.3	54.7	54.0	63.8	39.3
Profit attributable to shareholders of the parent company	39.3	34.2	41.3	26.8	53.9	53.6	63.2	39.2

KB Life Insurance

(bn Won)	1Q20	2Q20	3Q20	4Q20	1Q21	2Q21	3Q21	4Q21(E)
Net interest income	36.2	36.0	37.4	39.2	40.1	42.8	43.6	44.6
Net fee and commission income	-3.5	-3.9	-3.8	-4.0	-3.8	-5.0	-4.4	-5.0
Net other operating income(expenses)	-8.8	-7.8	-20.3	-43.8	-14.3	-28.8	-27.4	-50.6
Gross operating income	23.9	24.3	13.3	-8.6	22.0	9.0	11.8	-11.0
General & administrative expenses	17.4	16.3	16.8	19.9	18.6	18.0	17.1	19.7
Provision for credit losses	-1.1	0.1	0.1	0.0	0.2	0.0	-3.0	0.7
Net operating profit	7.6	7.9	-3.6	-28.5	3.2	-9.0	-2.3	-31.4
Net non-operating profit(loss)	-0.1	0.0	0.1	-16.2	-0.1	0.3	0.3	0.4
Profit before income tax	7.5	7.9	-3.5	-44.7	3.1	-8.7	-2.0	-31.0
Profit for the period	5.9	5.9	-2.6	-32.4	-1.5	-9.5	-7.1	-28.5
Profit attributable to shareholders of the parent company	5.9	5.9	-2.6	-32.4	-1.5	-9.5	-7.1	-28.5

KB Real Estate Trust

(bn Won)	1Q20	2Q20	3Q20	4Q20	1Q21	2Q21	3Q21	4Q21(E)
Net interest income	1.8	1.5	1.1	1.2	1.1	1.2	1.2	1.5
Net fee and commission income	35.4	33.4	31.5	30.3	45.0	33.2	46.5	34.5
Net other operating income(expenses)	0.6	-1.0	1.2	0.5	0.1	-0.6	0.4	2.6
Gross operating income	37.8	33.9	33.8	32.0	46.2	33.8	48.1	38.6
General & administrative expenses	7.2	9.9	8.9	12.7	8.5	10.2	9.4	15.8
Provision for credit losses	2.5	0.2	1.0	3.4	1.7	1.2	0.7	8.8
Net operating profit	28.1	23.8	23.9	15.9	36.0	22.4	38.0	14.0
Net non-operating profit(loss)	0.3	-0.1	-0.4	-0.6	-0.1	0.5	-0.2	-0.3
Profit before income tax	28.4	23.7	23.5	15.3	35.9	22.9	37.8	13.7
Profit for the period	21.0	17.3	17.2	11.4	27.1	16.5	27.6	10.3
Profit attributable to shareholders of the parent company	21.0	17.3	17.2	11.4	27.1	16.5	27.6	10.3

KB Savings Bank

(bn Won)	1Q20	2Q20	3Q20	4Q20	1Q21	2Q21	3Q21	4Q21(E)
Net interest income	15.3	18.2	18.2	19.6	23.6	24.1	26.4	28.1
Net fee and commission income	-0.4	-0.6	-0.1	-0.3	0.0	-0.7	-0.4	0.1
Net other operating income(expenses)	-1.2	-0.2	-1.5	-1.5	-1.5	-4.4	-3.8	-6.4
Gross operating income	13.7	17.4	16.6	17.8	22.1	19.0	22.2	21.8
General & administrative expenses	6.4	6.8	8.9	9.1	9.1	8.8	7.6	7.7
Provision for credit losses	2.4	2.0	2.5	3.1	4.4	8.5	4.0	9.4
Net operating profit	4.9	8.6	5.2	5.6	8.6	1.7	10.6	4.7
Net non-operating profit(loss)	0.0	0.0	-0.8	0.0	0.1	0.0	0.1	-0.2
Profit before income tax	4.9	8.6	4.4	5.6	8.7	1.7	10.7	4.5
Profit for the period	3.4	6.5	3.3	4.1	6.4	1.3	7.9	3.3
Profit attributable to shareholders of the parent company	3.4	6.5	3.3	4.1	6.4	1.3	7.9	3.3

KB Investment

(bn Won)	1Q20	2Q20	3Q20	4Q20	1Q21	2Q21	3Q21	4Q21(E)
Net interest income	-0.4	-0.5	-0.8	-0.7	-0.7	-0.8	-0.8	-0.9
Net fee and commission income	0.2	0.2	0.1	0.1	0.3	-0.2	0.5	-0.1
Net other operating income(expenses)	-2.8	13.9	30.2	1.3	11.1	30.2	4.3	48.1
Gross operating income	-3.0	13.6	29.5	0.7	10.7	29.2	4.0	47.1
General & administrative expenses	3.9	3.8	12.0	5.1	3.5	6.7	2.9	6.8
Provision for credit losses	0.0	0.0	0.0	0.0	0.0	0.0	0.0	0.0
Net operating profit	-6.9	9.8	17.5	-4.4	7.2	22.5	1.1	40.3
Net non-operating profit(loss)	-1.0	-0.7	1.9	-0.8	-1.0	0.9	-0.1	4.9
Profit before income tax	-7.9	9.1	19.4	-5.2	6.2	23.4	1.0	45.2
Profit for the period	-5.3	6.8	15.0	-1.1	3.9	17.7	0.2	33.5
Profit attributable to shareholders of the parent company	-5.3	6.8	15.0	-1.1	3.9	17.7	0.2	33.5

KB Data Systems

(bn Won)	1Q20	2Q20	3Q20	4Q20	1Q21	2Q21	3Q21	4Q21(E)
Net interest income	0.1	0.0	0.1	0.0	0.0	0.1	-0.1	0.1
Net fee and commission income	-0.1	-0.1	-0.1	0.0	-0.1	-0.1	0.0	-0.1
Net other operating income(expenses)	3.4	2.3	1.6	1.0	1.7	1.7	3.4	3.5
Gross operating income	3.4	2.2	1.6	1.0	1.6	1.7	3.3	3.5
General & administrative expenses	1.7	2.6	2.7	2.6	2.4	2.6	2.3	2.6
Provision for credit losses	0.0	0.1	-0.1	0.1	0.0	-0.1	0.1	-0.1
Net operating profit	1.7	-0.5	-1.0	-1.7	-0.8	-0.8	0.9	1.0
Net non-operating profit(loss)	0.0	0.0	0.0	-0.1	0.0	0.1	0.2	0.2
Profit before income tax	1.7	-0.5	-1.0	-1.8	-0.8	-0.7	1.1	1.2
Profit for the period	1.1	-0.2	-0.8	-1.8	-1.4	-0.1	1.1	0.9
Profit attributable to shareholders of the parent company	1.1	-0.2	-0.8	-1.8	-1.4	-0.1	1.1	0.9

KB Credit Information

(bn Won)	1Q20	2Q20	3Q20	4Q20	1Q21	2Q21	3Q21	4Q21(E)
Net interest income	0.0	0.1	0.0	0.1	0.0	0.1	0.0	0.0
Net fee and commission income	0.0	0.0	0.0	-0.1	0.0	0.0	-0.1	0.0
Net other operating income(expenses)	3.9	3.5	4.3	4.3	4.0	4.5	3.2	4.0
Gross operating income	3.9	3.6	4.3	4.3	4.0	4.6	3.1	4.0
General & administrative expenses	3.7	3.9	3.8	4.1	3.9	3.8	3.9	3.9
Provision for credit losses	0.0	0.0	0.0	0.0	0.0	0.0	0.0	0.0
Net operating profit	0.2	-0.3	0.5	0.2	0.1	0.8	-0.8	0.1
Net non-operating profit(loss)	0.0	0.0	0.0	0.5	0.0	0.0	0.0	-0.1
Profit before income tax	0.2	-0.3	0.5	0.7	0.1	0.8	-0.8	0.0
Profit for the period	0.2	-0.3	0.4	0.8	0.1	0.5	-0.6	0.4
Profit attributable to shareholders of the parent company	0.2	-0.3	0.4	0.8	0.1	0.5	-0.6	0.4

[Return to Home](#)
[Other Subsidiaries](#)
[Disclaimer](#)
[Highlights](#)
[KB Financial Group](#)
[KB Kookmin Bank](#)
[KB Securities](#)
[KB Insurance](#)
[KB Kookmin Card](#)
[Prudential life Insurance](#)
[Other Subsidiaries](#)
[Condensed Income Statement](#)
[Condensed Balance Sheet](#)
[Contacts](#)
KB Asset Management

(bn Won)	Mar. 20	Jun. 20	Sep. 20	Dec. 20	Mar. 21	Jun. 21	Sep. 21	Dec. 21(E)
Total Assets	392.9	385.9	413.3	335.6	312.2	343.8	363.1	375.7
Total Liabilities	223.2	198.3	207.9	112.5	124.2	134.3	135.1	128.6
Total Equity	169.7	187.6	205.4	223.1	187.9	209.5	228.0	247.2

KB Capital

(bn Won)	Mar. 20	Jun. 20	Sep. 20	Dec. 20	Mar. 21	Jun. 21	Sep. 21	Dec. 21(E)
Total Assets	11,504.8	12,140.4	12,326.6	12,823.7	12,901.3	13,803.1	14,180.6	14,529.4
Total Liabilities	10,263.2	10,866.5	10,916.4	11,392.2	11,422.3	12,272.5	12,591.1	12,707.2
Total Equity	1,241.6	1,274.0	1,410.2	1,431.6	1,479.0	1,530.6	1,589.5	1,822.2

KB Life Insurance

(bn Won)	Mar. 20	Jun. 20	Sep. 20	Dec. 20	Mar. 21	Jun. 21	Sep. 21	Dec. 21(E)
Total Assets	9,461.4	9,998.8	10,213.7	10,424.9	10,698.6	10,904.1	10,800.8	10,634.6
Total Liabilities	8,850.7	9,361.9	9,582.2	9,842.8	10,171.6	10,381.4	10,300.1	10,174.3
Total Equity	610.8	636.9	631.4	582.1	527.0	522.8	500.7	460.3

KB Real Estate Trust

(bn Won)	Mar. 20	Jun. 20	Sep. 20	Dec. 20	Mar. 21	Jun. 21	Sep. 21	Dec. 21(E)
Total Assets	374.1	393.4	420.4	437.6	438.2	445.2	475.9	496.5
Total Liabilities	90.2	92.3	102.1	108.1	116.6	107.1	110.2	119.7
Total Equity	283.8	301.1	318.3	329.5	321.6	338.1	365.7	376.8

KB Savings Bank

(bn Won)	Mar. 20	Jun. 20	Sep. 20	Dec. 20	Mar. 21	Jun. 21	Sep. 21	Dec. 21(E)
Total Assets	1,403.4	1,550.0	1,700.7	1,883.7	2,084.2	2,345.8	2,587.1	2,601.2
Total Liabilities	1,190.7	1,331.1	1,478.7	1,658.1	1,852.3	2,095.0	2,328.4	2,339.0
Total Equity	212.7	218.9	222.0	225.6	231.9	250.8	258.7	262.1

KB Investment

(bn Won)	Mar. 20	Jun. 20	Sep. 20	Dec. 20	Mar. 21	Jun. 21	Sep. 21	Dec. 21(E)
Total Assets	761.7	801.3	850.8	848.7	836.5	895.6	953.6	1,197.7
Total Liabilities	552.2	585.1	619.6	618.6	612.4	653.9	711.6	922.2
Total Equity	209.5	216.2	231.2	230.1	224.0	241.7	242.0	275.5

KB Data Systems

(bn Won)	Mar. 20	Jun. 20	Sep. 20	Dec. 20	Mar. 21	Jun. 21	Sep. 21	Dec. 21(E)
Total Assets	44.1	44.5	42.7	40.3	38.9	41.8	57.6	43.7
Total Liabilities	22.3	22.9	22.0	23.0	22.9	26.0	40.6	25.1
Total Equity	21.8	21.6	20.8	17.3	16.0	15.8	17.0	18.6

KB Credit Information

(bn Won)	Mar. 20	Jun. 20	Sep. 20	Dec. 20	Mar. 21	Jun. 21	Sep. 21	Dec. 21(E)
Total Assets	27.9	28.5	28.3	27.7	27.3	28.7	27.7	28.7
Total Liabilities	12.9	13.8	13.1	11.8	11.3	12.1	11.8	12.3
Total Equity	15.1	14.8	15.2	15.9	16.0	16.6	15.9	16.4

[Return to Home](#)

[Disclaimer](#)

[Highlights](#)

[KB Financial Group](#)

[KB Kookmin Bank](#)

[KB Securities](#)

[KB Insurance](#)

[KB Kookmin Card](#)

[Prudential Life Insurance](#)

[Other Subsidiaries](#)

[Contacts](#)

Address : Investor Relations, 18F, Kookmin Bank 141, Uisadang-daero, Yeongdeungpo-gu, Seoul 07332, Korea

E-mail : kbir@kbfkg.com

Fax: 82-2-2073-2848

IR Officers:

상무 권봉중	Peter BJ Kwon	Head of IR	82-2-2073-2841	peter.kwon@kbfkg.com
팀장 성은주	Eunju Sung	Team Head	82-2-2073-2842	ejsung@kbfkg.com
차장 이선우	Sunwoo Lee	Senior Manager	82-2-2073-2843	swlee@kbfkg.com
차장 김재규	Jaekyu Kim	Senior Manager	82-2-2073-2844	jj1123@kbfkg.com
차장 윤영단	Jaekyu Kim	Senior Manager	82-2-2073-2824	dana.yun@kbfkg.com
차장 이준호	Joonho Rhi	Senior Manager	82-2-2073-2845	joon.rhi@kbfkg.com
과장 강민기	MinKi Kang	Manager	82-2-2073-2882	mk.kang@kbfkg.com
과장 김현수	Hyunsu Kim	Manager	82-2-2073-7807	hyun.kim@kbfkg.com
과장 박진희	Jinhee Park	Manager	82-2-2073-2856	p.jh@kbfkg.com